



BANCO CENTRAL DO BRASIL

Working Paper Series



**Inflation Targeting in Brazil: Constructing Credibility under
Exchange Rate Volatility**

André Minella, Paulo Springer de Freitas, Ilan Goldfajn and Marcelo Kfoury Muinhos
July, 2003

ISSN 1518-3548
CGC 00.038.166/0001-05

Working Paper Series	Brasília	n. 77	Jul	2003	P. 1-38
----------------------	----------	-------	-----	------	---------

Working Paper Series

Edited by:

Research Department (Depep)

(E-mail: workingpaper@bcb.gov.br)

Reproduction permitted only if source is stated as follows: Working Paper Series n. 77

Authorized by Afonso Sant'Anna Bevilacqua (Deputy Governor for Economic Policy).

General Control of Subscription:

Banco Central do Brasil

Demap/Disud/Subip

SBS – Quadra 3 – Bloco B – Edifício-Sede – 2º ss

70074-900 Brasília – DF – Brazil

Phone: (5561) 414-1392

Fax: (5561) 414-3165

The views expressed in this work are those of the authors and do not reflect those of the Banco Central or its members.

Although these Working Papers often represent preliminary work, citation of source is required when used or reproduced.

As opiniões expressas neste trabalho são exclusivamente do(s) autor(es) e não refletem a visão do Banco Central do Brasil.

Ainda que este artigo represente trabalho preliminar, citação da fonte é requerida mesmo quando reproduzido parcialmente.

Banco Central do Brasil Information Bureau

Address: Secre/Surel/Diate

SBS – Quadra 3 – Bloco B

Edifício-Sede – 2º ss

70074-900 Brasília – DF – Brazil

Phones: (5561) 414 (...) 2401, 2402, 2403, 2404, 2405, 2406

DDG: 0800 992345

Fax: (5561) 321-9453

Internet: <http://www.bcb.gov.br>

E-mails: cap.secre@bcb.gov.br

dinfo.secre@bcb.gov.br

Inflation Targeting in Brazil: Constructing Credibility under Exchange Rate Volatility*

André Minella**

Paulo Springer de Freitas**

Ilan Goldfajn***

Marcelo Kfoury Muinhos**

Abstract

This paper assesses the challenges faced by the inflation-targeting regime in Brazil. The confidence crisis in the future performance of the Brazilian economy and the increase in risk aversion in international markets were responsible for a sudden stop of capital inflows in 2002 that caused a significant depreciation of the exchange rate. The inflation-targeting framework has played a critical role in macroeconomic stabilization. We stress two important challenges: construction of credibility and exchange rate volatility. The estimations indicate the following results: i) the inflation targets have worked as an important coordinator of expectations; ii) the Central Bank has reacted strongly to inflation expectations; iii) there has been a reduction in the degree of inflation persistence; and iv) the exchange rate pass-through for "administered or monitored" prices is two times higher than for "market" prices.

Keywords: inflation targeting, Brazil, monetary policy

JEL Classification: E31, E52, E58

* This paper was finished in May 2003 and is a shorter and updated version of Minella, Freitas, Goldfajn, and Muinhos (2002). We thank the participants in the Autumn 2002 Central Bank Economists' Meeting at the Bank for International Settlements (BIS), in the seminar "Regional and International Implications of the Financial Instability in Latin America" held in April at University California Santa Cruz, especially Sebastian Edwards and Reuven Glick, and in a seminar at the Central Bank of Brazil for their comments, and Richard Clarida for comments in a workshop. We also are indebted to Fabio Araujo, Thaís P. Ferreira and Myrian B. S. Petrassi for their contributions. We are also grateful to Luis A. Pelicioni, Marcileide A. da Silva, and Raquel K.P. de S. Tsukada for assistance with data. The views expressed are those of the authors and not necessarily those of the Central Bank of Brazil.

** Research Department, Central Bank of Brazil. E-mails: andre.minella@bcb.gov.br, paulo.freitas@bcb.gov.br, and marcelo.kfoury@bcb.gov.br

*** Former Deputy Governor for Economic Policy, Central Bank of Brazil, and Pontifical Catholic University of Rio de Janeiro (PUC-RJ). E-mail: goldfajn@uol.com.br

1. Introduction

This paper assesses the inflation-targeting regime in Brazil adopted in June 1999, examining the main challenges it has faced over its first three and half years. In particular, we stress two important challenges that are also common in other emerging market economies: construction of credibility, and high exchange rate volatility.

The inflation-targeting mechanism has played a key role in macroeconomic stabilization in Brazil. In spite of large inflationary shocks, the inflation rate has been maintained at a low level. Exchange rate depreciations in 2001 and 2002 were stress tests for the regime. In particular, in 2002 monetary policy faced a confidence crisis in the future performance of the Brazilian economy and an increase in risk aversion in international markets. Rollover rates of domestic public debt securities diminished considerably, and the Brazilian economy experienced a “sudden stop” in capital inflows to the country, generating a significant nominal depreciation of the exchange rate.

Inflation targeting in emerging market economies has been a more challenging task than in developed economies. The conduct of monetary policy has to build credibility and reduce inflation rate levels, and simultaneously deal with a greater vulnerability to shocks. In fact, one basic task of the Central Bank of Brazil has been to build credibility as a monetary authority committed to price stability in the context of large inflationary shocks. This requires actions consistent with the inflation-targeting framework combined with high levels of transparency and communication with the public.¹ Furthermore, it is expected that private agents' inflation expectations do not depart way from the targets without converging to them in a certain time horizon. We present some evidence on: i) the behavior of the central bank; ii) the behavior of private agents' expectations; iii) change in inflation dynamics; and iv) exchange rate volatility and pass-through.

Specifically, we estimate the central bank's reaction function, and find that monetary policy has been reacting strongly to inflationary pressures. In particular, the Central Bank reacts to inflation expectations, giving evidence that the monetary policy is conducted on a forward-looking basis.

¹ For the importance of transparency and communication, and an assessment of inflation targeting in emerging market economies, see Fraga, Goldfajn, and Minella (2003).

We show that private sector inflation expectations did not depart significantly from the country's inflation targets until September 2002, even when faced with inflationary shocks. We present evidence that the inflation targets have worked as an important coordinator of expectations. The end of 2002 and beginning of 2003 in turn represents a period dominated by uncertainties concerning the future conduct of economic policy. We also find some evidence of a change in inflation dynamics, namely a reduction in the degree of inflation persistence, which however seems to have shown some signs of resurgence at the end-2002. We also stress the significant inflationary pressures stemming from exchange rate volatility. We estimate the pass-through from exchange rate changes to the inflation rate using a VAR estimation, showing the higher pass-through for "administered or monitored" prices.

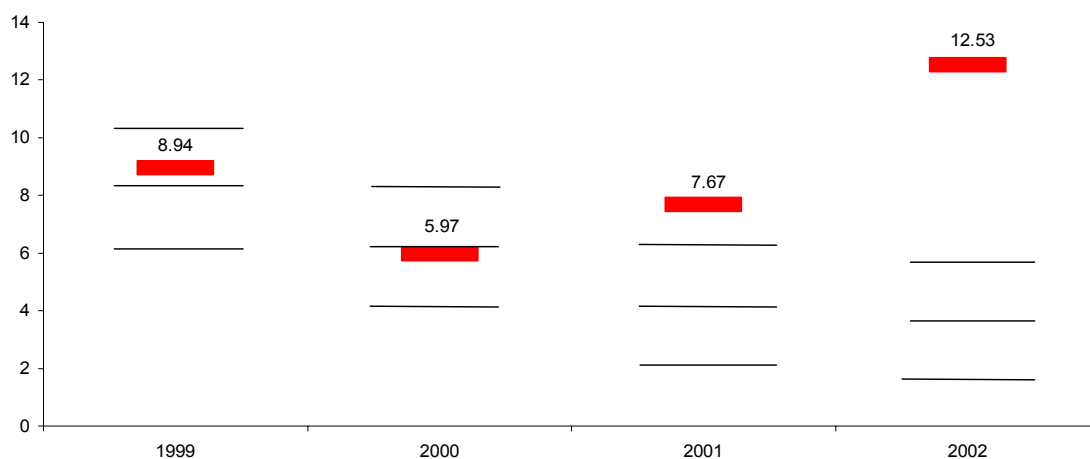
The following section presents an overview of the first three and half years of inflation targeting. Section 3 assesses the different challenges for the inflation-targeting regime. Section 4 deals with exchange rate volatility. A final section concludes the paper.

2. Overview of the first three and half years of inflation targeting

Macroeconomic policy in Brazil over the past three and half years has consisted of three basic elements: a floating exchange rate regime, sound fiscal policy, and inflation targeting. The current inflation-targeting regime was adopted in mid-1999, after the currency was floated in January of the same year. In the first two years, annual inflation rates met their targets, having absorbed the initial impact of the exchange rate depreciation in 1999. The successful transition was supported by a considerable fiscal improvement, a shift in the primary (non-interest) fiscal balance of the consolidated public sector from roughly zero in 1998 to a surplus of 3.23% of GDP in 1999, 3.51% in 2000, 3.68% in 2001, and 3.9% in 2002.

Figure 1 shows actual inflation and the targets for 1999-2002. The inflation rate is measured by a consumer price index, the IPCA. Brazil's inflation targeting regime includes tolerance intervals around the central inflation targets. From 1999 to 2002, the tolerance intervals were 2 percentage points above and below the central target (for 2003 and 2004 the intervals were enlarged to 2.5 percentage points). The inflation rate was 8.9% and 6.0% for targets of 8% and 6% in 1999 and 2000, respectively.

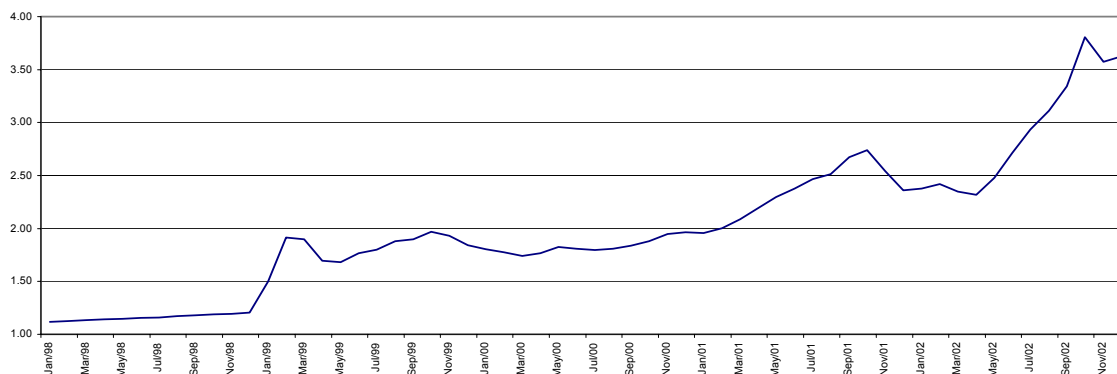
Figure 1
Inflation Targets (upper limit, central target, and lower limit) and Inflation Rate (% p.a.)



However, in 2001 and 2002, several external and domestic shocks hit the Brazilian economy with significant impacts on inflation. The inflation rate reached 7.7% in 2001, 1.7 p.p. above the target's upper tolerance interval, and 12.5% in 2002, more than 5 points above the upper limit.² In 2001, a domestic energy crisis, the deceleration of the world economy, the September 11 terrorist attacks in the United States, and the Argentine crisis generated strong pressures on the exchange rate. In 2002, a further sharp depreciation was driven by increased risk aversion in international capital markets, and mainly by a confidence crisis related to uncertainties about the future Brazilian macroeconomic policies under a new government. Rollover rates of domestic public debt securities diminished considerably, and the Brazilian economy experienced a “sudden stop” in capital inflows to the country, generating a significant nominal depreciation of the exchange rate. The country risk premium rose from 750 basis points in April 2002 to a peak of 2,400 basis points at the end of September. Figure 2 shows the level of the exchange rate since 1998. The exchange rate (measured in units of local currency per dollar) rose 20.3% and 53.5% in 2001 and 2002, respectively (equivalent to a depreciation of the domestic currency of 16.9% and 34.8%). In addition to the impacts of the exchange rate depreciation, the energy crisis from 2001 to the beginning of 2002, and the deregulation of the domestic market for oil by-products also led to direct inflationary pressures.

² The reasons for the non-fulfillment of the targets in 2001 and 2002 were explained in open letters of the Governor of the Central Bank of Brazil to the Minister of Finance, available at www.bcb.gov.br.

Figure 2
Exchange Rate Level (R\$/US\$) - 1998:01 - 2002:12 (Monthly Average)



Monetary policy has been faced with an important change in relative prices that has pushed up the overall inflation rate. The administered by contract or monitored prices – administered prices, for short – have increased by substantially more than the other prices – market prices, for short. Considering the period since the start of inflation targeting in Brazil, the ratio of administered prices to market prices has increased 31.4% (1999:7 - 2003:2). The administered prices are defined as those that are relatively insensitive to domestic demand and supply conditions or that are in some way regulated by a public agency.³

The dynamics of administered prices differ from those of market prices in three ways: i) dependence on international prices in the case of oil by-products; ii) greater pass-through from the exchange rate;⁴ and iii) stronger backward-looking behavior.⁵

Using the structural model of the Central Bank⁶ and information concerning the mechanisms for the adjustment of administered prices, it is possible to estimate the

³ The group includes, among others, oil by-products, fixed telephone fees, residential electricity, and public transportation. The aggregate weight of administered prices in the IPCA was 28.0% in December 2002.

⁴ There are three basic links: i) the price of oil by-products for consumption depends on international oil prices denominated in domestic currency; ii) part of the resetting of electricity rates is linked to changes in the exchange rate; and iii) the contracts for price adjustments for electricity and telephone rates link these adjustments, at least partially, to the General Price Index (IGP), which is more affected by the exchange rate than the consumer price indexes.

⁵ Electricity and telephone rates are generally adjusted annually, and the contractual clauses usually stipulate that adjustments should be based on a weighted average of the past change of the IGP price index and the exchange rate.

⁶ For an overview of the structural model, see Bogdanski *et al.* (2000). Using the aggregate supply curve, which relates current market price inflation to the expected and past headline inflation, output gap, and exchange rate change, we estimate the contributions of the exchange rate pass-through and of inertia from the previous year to the market prices. For the administered prices, the estimation depends on the criteria used for the price adjustment of specific items.

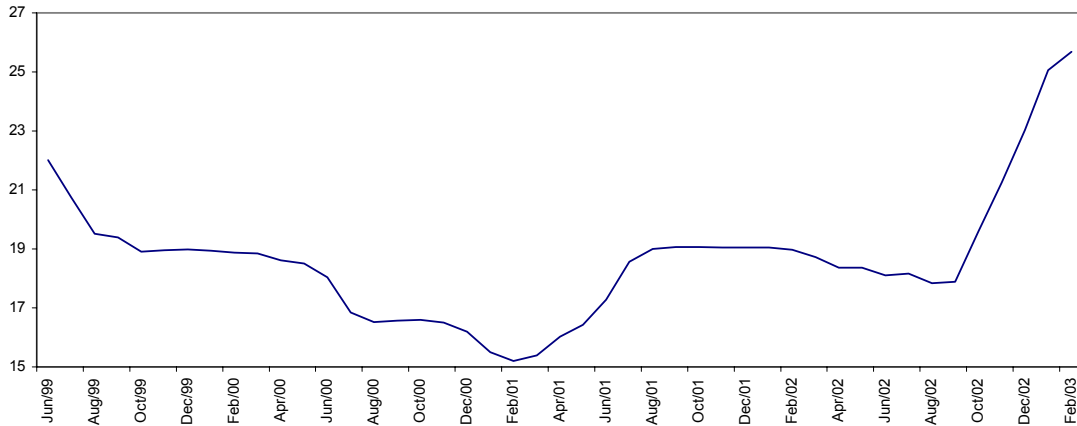
contribution for the inflation rate stemming from exchange rate pass-through, inflation inertia from the previous year, and inflation of administered prices and market prices that is not explained by the exchange rate pass-through and the mentioned inertia. Table 1 shows the estimated values for 2001 and 2002. In 2001, 38% of the inflation rate can be explained by the depreciation of the exchange rate, whereas for 2002 the contribution of the exchange rate stood at 46%.

Table 1
Contributions for Inflation: 2001-2002.
(In percentage points and in percentage contribution)

Item	2001		2002	
	Contributions in percentage points	Percentage contribution	Contributions in percentage points	Percentage contribution
Market Price Inflation Excluding Exchange Rate Pass-Through and Inertia	2.4	28	3.9	31
Administered Price Inflation Excluding Exchange Rate Pass-Through and Inertia	1.7	24	1.9	15
Inertia	0.7	10	0.9	7
Exchange Rate Pass-Through	2.9	38	5.8	46
Total	7.7	100	12.5	100

In 2001 and 2002, the Central Bank aimed at minimizing the potential inflationary effects of the different shocks, mainly the exchange rate depreciation and the increase in administered prices. The main goal of monetary policy was to limit the propagation of the shocks to the other prices of the economy. Figure 3 presents the path of the basic interest rate – the Selic rate – controlled by the Central Bank. Between March and July 2001, the Central Bank raised the interest rate significantly (375 b.p.), interrupting the downward trend observed previously. Some improvement in the macroeconomic context at the beginning of 2002 allowed some reduction in the interest rate, interrupted by the inflationary pressure coming from the exchange rate depreciation.

Figure 3
Interest Rate (over Selic) - 1999:06 - 2003:02 (%p.a. - monthly average)



We can also verify that there has been a gain in terms of the variability of the inflation rate, output, and interest rate. Table 2 reports the average, standard error and coefficient of variation (ratio of standard error to average) for these variables. It compares the first three and half years of inflation targeting with the Real Plan period before the adoption of inflation targeting. For the earlier period, the table also reports the figures for a shorter sample, which excludes the first quarters of the Real Plan, which were characterized by a transition to stabilization. For the inflation-targeting period, we also consider a shorter sample that excludes the second half of 2002. The inflation rate is measured by the IPCA, output by seasonally adjusted GDP, and the (nominal) interest rate by the Selic rate. We use quarterly data. In the case of GDP, we use the annualized quarter-over-quarter growth rates. The variability of output and the interest rate is lower in the inflation-targeting period. The volatility of inflation in turn is lower if we consider the shorter sample for the inflation-targeting period. This does not imply necessarily that there have been gains in terms of the trade-off between output and inflation because this result also depends on the magnitude and variability of the shocks that hit the economy. On average, output growth is higher and the interest rate is lower in the inflation-targeting period. The inflation rate is lower in the inflation-targeting period if we compare it to the whole period before inflation targeting. In the case of the 1996:01-1999:02 period, the lower average inflation rate is to a large extent a consequence of the pegged exchange rate regime, which turned out to be unsustainable in the medium run. When the inflation targeting sample ends in 2002:04,

the standard deviation of inflation is higher, reflecting the increase in the inflation rate in the last months of that year.

Table 2
Average, Standard Deviation and Coefficient of Variation for Inflation Rate, GDP and Interest Rate
Different Periods (Quarterly Data)

Period	Inflation Rate			GDP			Interest Rate		
	Average (per year)	Standard Deviation	Coefficient of Variation	Average (per year)	Standard Deviation	Coefficient of Variation	Average (per year)	Standard Deviation	Coefficient of Variation
Real Plan Before Inflation Targeting									
1994:4 - 1999:2	10.3	9.2	0.89	2.0	6.3	3.16	35.4	14.1	0.40
1996:1 - 1999:2	5.8	4.8	0.84	2.0	5.2	2.55	28.2	6.0	0.21
Inflation Targeting									
1999:3 - 2002:2	7.1	3.0	0.42	2.4	3.5	1.46	18.0	1.4	0.08
1999:3 - 2002:4	8.9	6.0	0.68	2.5	3.3	1.28	18.2	1.6	0.09

3. Constructing credibility

The success of inflation targeting hinges, to a large extent, on the construction of credibility. Private agents should believe that the central bank will act consistently within the inflation-targeting framework. Gaining credibility, however, takes time. In the context of large shocks, even with a strong response by the monetary authority, expectations will tend to deviate from the targets. In this case, communication with the public so as to explain the reasons of the non-fulfillment of the targets becomes crucial. Furthermore, it is important that expectations converge to the target over a certain time horizon. In this section, we present some evidence on: i) the behavior of the central bank, ii) the behavior of private agents' expectations, iii) the change in inflation dynamics.

3.1. Reaction function of the Central Bank

We estimate a reaction function for the Central Bank of Brazil that relates the interest rate to deviations of expected inflation from the target, allowing also for some interest-rate smoothing and reaction to the output gap and movements of the exchange rate:

$$i_t = \alpha_1 i_{t-1} + (1 - \alpha_1)(\alpha_0 + \alpha_2(E_t \pi_{t+j} - \pi_{t+j}^*) + \alpha_3 y_{t-1} + \alpha_4 \Delta e_{t-1}), \quad (1)$$

where i_t is the Selic rate decided by the Monetary Policy Committee (Copom), $E_t \pi_{t+j}$ is inflation expectations and π_{t+j}^* is the inflation target, both referring to some period in the future as will be explained below,⁷ y_t is the output gap, and Δe_{t-1} is the nominal exchange rate variation. We use monthly data. Monthly industrial production (seasonally adjusted) measured by IBGE is the proxy for output. The output gap was obtained by the difference between the actual and the HP-filtered series.⁸

We use two sources for inflation expectations. The first one is the inflation forecasts of the Central Bank of Brazil presented in its quarterly *Inflation Report*. The advantage of this source is that the Copom should make interest rate decisions based on its own inflation forecasts. The forecasts in the *Inflation Report* are made assuming a constant interest rate equal to the one decided in the previous Copom meeting. Therefore, they signal whether the Central Bank should change the interest rate.⁹ The second source is obtained from a daily survey that the Central Bank conducts among financial institutions and consulting firms.¹⁰ The survey asks what firms expect for year-end inflation in the current and in the following years.¹¹

The Brazilian inflation-targeting regime sets year-end inflation targets for the current and the following two years. Since it is necessary to have a single measurement of the deviation of inflation from the target, we have used a weighted average of current year and following year expected deviation of inflation from the target, where the weights are inversely proportional to the number of months remaining in the year.¹²

⁷ Clarida, Galí, and Gertler (1998, 2000) estimate forward-looking reaction functions for the U.S., Germany, Japan, U.K., France, and Italy. Instead of using central bank or survey expectations, they employ a Generalized Method of Moments (GMM) estimation. The reaction function is basically a forward-looking version of the backward-looking reaction function proposed by Taylor (1993).

⁸ Estimations using output growth and output gap obtained by extraction of a linear trend were also performed. The results were similar and are not reported in this paper.

⁹ Public information about the Copom's inflation forecasts is available only on a quarterly basis. In order to obtain monthly figures, it was necessary to interpolate the data.

¹⁰ This survey is available at the Central Bank of Brazil website (www.bcb.gov.br). In this estimation, we use the inflation expectations collected on the eve of Copom meetings, avoiding possible endogeneity problems.

¹¹ In November 2001 the survey started collecting expectations for the following 12 months as well.

¹² $D_j = \frac{(12-j)}{12}(E_j \pi_t - \pi_t^*) + \frac{j}{12}(E_j \pi_{t+1} - \pi_{t+1}^*)$, where D_t is the measure of expected deviation of inflation from the target, j indexes the month, and t indexes the year. Observe that D_t does not contain inflation expectations referring to two years in advance, despite the existence of a target for such period. Given the shorter lags in the transmission mechanism of monetary policy estimated for the Brazilian economy and

Tables 3 and 4 report the estimations using the Central Bank's inflation forecasts (sample 1999:07-2002:12) and the market forecasts (sample 2000:01-2002:12), respectively.¹³ We present three specifications: the first includes only the deviation of expected inflation from the targets, the second one adds the output gap term, and the third includes also the 12-month exchange rate change. When relevant, we also compare the results to an estimation with sample ending in 2002:06 (not shown).

Table 3
Estimation of Reaction Function of Central Bank Using Central Bank's Inflation Expectations
Dependent Variable: Selic Interest Rate Target

Regressors	Coefficients and standard errors		
	I	II	III
Constant	1.65 (1.08)	3.06* (1.59)	3.80** (1.57)
Interest Rate (t-1)	0.90*** (0.06)	0.82*** (0.09)	0.77*** (0.09)
Inflation Rate Expectations (deviations from the target)	5.70* (3.20)	3.54** (1.51)	2.71*** (0.87)
Output Gap (t-1)		-0.36* (0.21)	-0.18 (0.19)
Exchange Rate (t-1) (twelve-month change)			0.05* (0.03)
R-squared	0.9129	0.9160	0.9251
Adjusted R-squared	0.9084	0.9094	0.9170
LM Test for Autocorrelation of Residuals (p-values)			
1 lag	0.7853	0.7210	0.7543
4 lags	0.6831	0.5298	0.5025

Notes: Standard error in parentheses. *, ** and *** indicate the coefficient is significant at the 10%, 5%, and 1% level, respectively.

The first noteworthy result is the high degree of interest-rate smoothing. The coefficient on the lagged interest rate is between 0.7 and 0.9. Most importantly, the point estimates of the coefficient on inflation expectations are greater than one and significantly different from zero in all specifications. Moreover, in the case of the estimations with market inflation expectations, the coefficient is statistically greater

the higher uncertainty associated with the forecasts, it is reasonable to assume the Copom concentrates on current and following year forecasts when making interest rate decisions.

¹³ The data on market expectations for the IPCA are available only as of January 2000.

than one, with point estimates around 2.0-2.3 (the p-values for the test that the coefficient is equal to 1 are 0.012, 0.040, and 0.053 in specifications I, II, and III, respectively).¹⁴ In the case of central bank expectations, the values are less stable across specifications (from 2.7 to 5.7).¹⁵ The estimated coefficient is significantly different from 1 or close to that (the p-values for the test that the coefficient is equal to 1 are 0.150, 0.101, and 0.058 in specifications I, II, and III, respectively). Therefore, we can conclude that the Central Bank has been reacting strongly to expected inflation. It conducts monetary policy on a forward-looking basis, and responds to inflationary pressures.

Table 4
Estimation of Reaction Function of Central Bank Using Market's Inflation Expectations
Dependent Variable: Selic Interest Rate Target

Regressors	Coefficients and standard errors		
	I	II	III
Constant	4.58*** (1.52)	5.38** (2.07)	5.24** (2.12)
Interest Rate (t-1)	0.71*** (0.09)	0.67*** (0.12)	0.67*** (0.12)
Inflation Rate Expectations (deviations from the target)	2.32*** (0.53)	2.09*** (0.53)	2.05*** (0.54)
Output Gap (t-1)		-0.10 (0.15)	-0.07 (1.67)
Exchange Rate (t-1) (twelve-month change)			0.01 (0.03)
R-squared	0.9205	0.9214	0.9219
Adjusted R-squared	0.9157	0.9140	0.9118
LM Test for Autocorrelation of Residuals (p-values)			
1 lag	0.6586	0.6411	0.5794
4 lags	0.5362	0.3991	0.4150

Notes: Standard error in parentheses. *, ** and *** indicate the coefficient is significant at the 10%, 5%, and 1% level, respectively.

¹⁴ Favero and Giavazzi (2002) have also estimated a similar reaction function using the market expectations for a shorter sample. They have found a coefficient equal to 1.78. Silva and Portugal (2002) have found different results using a different specification. They have compared the inflation-targeting period with the period of stabilization before inflation targeting, using in the regression a one-month ahead expected inflation obtained with an autoregressive estimation.

¹⁵ If we compare to a sample that ends in 2002:06, the point estimates in that shorter sample are similar when using market's expectations, and are lower in the case of central bank's expectations, although not statistically different.

The coefficient on output gap has the wrong sign, but it is statistically significant only in one of the specifications. One possible explanation for the negative sign is that part of the supply shocks that hit the economy led to an increase in inflation and simultaneously to a reduction in output. This clearly occurred in the case of the rationing in electricity. Since we observe a simultaneous interest rate increase and reduction of output, if the inflation expectations term does not capture this change completely, we tend to obtain negative coefficients for the output gap term. Furthermore, note that when we include the exchange rate the coefficient becomes not significant. External shocks tend to generate inflationary pressures at the same time that tend to decrease output, at least in the short run.

3.2. Inflation expectations and the role of the targets

Since mid-2001, 12-month inflation has been above the upper limit of the target tolerance interval.¹⁶ A naive analysis of the inflation-targeting regime in Brazil might say that this regime has not been successful in controlling inflation. Nevertheless, inflation outcomes are not a sufficient statistic to evaluate the performance of the Central Bank given the magnitude of the supply shocks. The evolution of inflation expectations, and the role of the target are also relevant variables in assessing the credibility of the Central Bank.

In the context of significant shocks, it is crucial that private agents understand that, even with a monetary policy consistent with the inflation-targeting framework, actual inflation may breach the targets. Given the magnitude of the shocks that hit the Brazilian economy, a strong reaction of the monetary authorities cannot avoid an increase in the inflation rate and some departure of inflation expectations from the original targets. In terms of inflation expectations, it is important is that they converge to the targets over a certain time horizon.

Two conditions are necessary to guarantee inflation expectations will remain under control. The first is that the conduct of monetary policy should be consistent with the main guidelines expressed by the Copom. In this sense, the reaction function

¹⁶ The targets are established only for year-end inflation. We have calculated targets for the other months of the year using linear interpolation.

estimated in the previous subsection shows that the Central Bank has been acting consistently within the inflation-targeting framework. The second condition for controlling expectations is clear communication with the public. It is important that private agents understand why actual inflation was above the target and how monetary policy is being conducted in order to drive inflation back to the target. The Central Bank of Brazil communicates with the market via informal speeches and formal documents, such as the minutes of the Copom meetings, which are released one week after the meetings, and the *Inflation Report*, which is published on a quarterly basis. Furthermore, the reasons for the non-fulfillment of the inflation targets in 2001 and 2002 were thoroughly explained in open letters to the Minister of Finance.

The conduct of monetary policy has been based on accommodating the first-round effects of supply and cost-push shocks. This means monetary policy will allow relative price movements to affect inflation, but will neutralize the second-round effects. The Central Bank has developed a methodology that calculates the inflationary impact of current supply shocks as well as the secondary impact of past shocks (due to inertia in the inflation process). Since the primary effect is accommodated, the optimal inflation path may imply that 12-month ahead inflation is above the previous annual target. Therefore, in this situation, given that the Central Bank is no longer aiming for the previous inflation target, it uses an "adjusted target". More specifically, the original target is adjusted in order to take into account the primary effects of the change in relative prices and of past inertia that will be accommodated. Part of inertia is accommodated because the Central Bank also takes output volatility into account in its decisions. The new target is publicly announced.¹⁷ Although there is a credibility loss stemming from the target change itself, the gains in terms of transparency and communication are more significant. Private agents know the target the Central Bank is pursuing. Actually, keeping the old target would affect the credibility of the Central Bank because it could be considered unattainable.

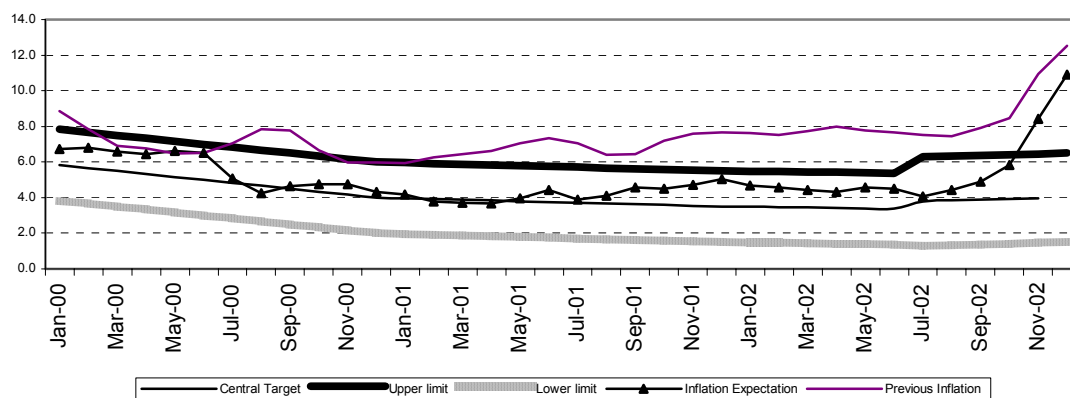
Figure 4 shows the 12-month ahead inflation that is expected by the market, the 12-month ahead target, and the actual 12-month accumulated inflation.¹⁸ It is clear that

¹⁷ The adjusted targets for 2003 and 2004, 8.5% and 5.5%, were published in the open letter from the Governor of the Central Bank to the Minister of Finance on 1/21/03 (Banco Central do Brasil, 2003). For a more detailed explanation of the methodology, see Freitas, Minella, and Riella (2002).

¹⁸ We estimate the 12-month ahead expected inflation rate using the expected inflation for the remaining months of the current year and, for the remaining months necessary to achieve 12 months, the

inflation expectations remained below the upper limit of the tolerance interval prior to the last quarter of 2002. This is true even since the second half of 2001, when actual inflation surpassed the tolerance interval. The correlation coefficient between the actual and expected inflation series has increased. From 2000:1 to 2002:1, the correlation is 0.22, but with the sample ending in 2002:12, the value is 0.74. As the graph shows, since mid-2000, the 12-month ahead inflation expectations have been below the actual 12-month inflation. This indicates that private agents tend to expect that the rise in the inflation rate will tend to reverse in the medium run. The fact that actual inflation has been above the value that was expected 12 months ago reflects basically the frequent and large cost-push shocks that hit the economy during this period. It is noteworthy that the difficulties the country faced last year impacted inflation expectations more significantly only in the last quarter of 2002. The median of inflation expectations for 2002 leveled out at around 4.5% through September, but then rapidly deteriorated afterwards and reached 11% at the end of December. The increase in expectations is associated with the expected inflationary effects of the strong exchange rate depreciation and the uncertainties about the future stance of monetary policy under the new government. It does not seem to reflect lack of credibility of the conduct of monetary policy during the period, but uncertainty about its maintenance in the near future.

Figure 4
12-Month Ahead Expected Inflation and Inflation Target, and Previous 12-Month Actual Inflation
2000:01 - 2002:12 (% p.a.)



corresponding proportion of expected inflation for the following year. The 12-month ahead target is estimated by interpolation.

Another source of evidence suggesting Central Bank gains in credibility comes from evaluation of the role of the targets in expectations formation. We have run OLS regressions of 12-month ahead market inflation expectations on its own lags, the 12-month ahead inflation target, the interest rate, and 12-month inflation rate (sample 2000:01-2003:02). Table 5 reports the results for this specification in column I. All coefficients are statistically significant and have the expected sign. The positive coefficient on the interest rate may be explained by the reaction of interest rates to inflationary pressures. When facing a large supply shock, the central bank raises the interest rate. However, the inflationary effects are not completely eliminated because of three reasons: i) presence of lags in the monetary policy transmission mechanisms; ii) the Central Bank also takes output volatility into account in its decisions; and iii) the Central Bank has acted so as to accommodate first order effects of the change in relative prices (and neutralize second-order effects). As a result, we observe that interest rate and inflation expectations move in the same direction. Since the Central Bank reacts to its own expectations of inflation, interest rate movements also reflect the central bank's inflation expectations.

Table 5
Estimation of Inflation Expectations
Dependent Variable: Market Inflation Rate Expectations - 2000:1 - 2003:2

Regressors	Coefficients and standard errors			
	I	II	III	IV
Constant	-7.35*** (2.33)	-7.33*** (2.32)	-6.22** (2.30)	-6.33** (2.33)
Market Inflation Rate Expectations (t-1)	0.91*** (0.18)	0.86*** (0.19)	0.89*** (0.18)	0.86*** (0.19)
Market Inflation Rate Expectations (t-2)	-0.80*** (0.17)	-0.72*** (0.19)	-0.62*** (0.19)	-0.60*** (0.20)
Interest Rate (t-1)	0.24** (0.12)	0.19 (0.13)	0.18 (0.12)	0.15 (0.12)
Inflation Rate Target (12-Month Ahead)	1.06*** (0.33)	1.22*** (0.36)	0.92*** (0.32)	1.01** (0.37)
12-Month Inflation Rate (t-1)	0.45*** (0.15)	0.46*** (0.15)	0.35** (0.15)	0.37** (0.16)
12-Month Exchange Rate Change (t-1)		0.01 (0.01)		0.01 (0.01)
Embi Plus Brazil (t-1)			0.06* (0.03)	0.05 (0.03)
R-squared	0.9148	0.9186	0.9247	0.9255
Adjusted R-squared	0.9007	0.9017	0.9091	0.9069
LM Test for Autocorrelation of Residuals (p-values)				
1 lag	0.2403	0.25875	0.5061	0.5465
4 lags	0.3869	0.2711	0.1725	0.0540

Notes: Standard error in parentheses. *, ** and *** indicate the coefficient is significant at the 10%, 5%, and 1% level, respectively.

Most importantly, expected inflation reacts significantly to the inflation targets (coefficient around 1). One could consider that this result could be a consequence of some correlation between targets and past inflation, but note that the regression also includes the actual 12-month inflation rate. Therefore, there are indications that the inflation targets play an important role for expectations. The past inflation term, however, has a statistically significant coefficient, indicating that past inflation still plays a role. It is interesting to note that, if we estimate the same regression with the sample ending in 2002:09, the past inflation term is not significant. Figure 5a shows the recursive estimation for the coefficient on the past inflation term. It started increasing at the end of 2001. We can consider that there are two reasons for this behavior. First, when the economy is hit by a significant inflationary shock, this tends to raise inflation expectations. Second, in the last months of 2002 and beginning of 2003, when the recursive estimates present higher growth, private agents assigned some non-trivial probability to monetary policy under the future government being less strict on inflation. Since the economy was being hit by inflationary shocks, private agents tended to consider that the inflationary effects of these shocks would be more persistence over time. As a result, we observe a higher weight on past inflation in their expectations. Specifications II, III, and IV also include the 12-month exchange rate change and the EMBI Plus for Brazil. For a sample ending in 2002:09 (not shown), the EMBI Plus is not statistically significant, but with the extended sample it becomes significant, possibly reflecting the effect of the confidence crisis of end-2002. Although the exchange rate change is not statistically significant, we show its recursive estimates in Figure 5b, which rise at the end-2002.

Figure 5a
Recursive Estimates of the Coefficient on Past Inflation

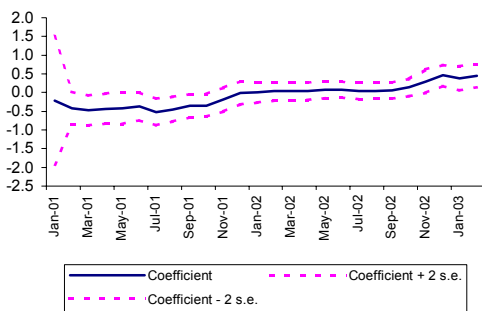
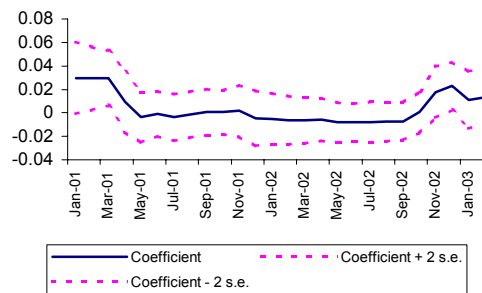
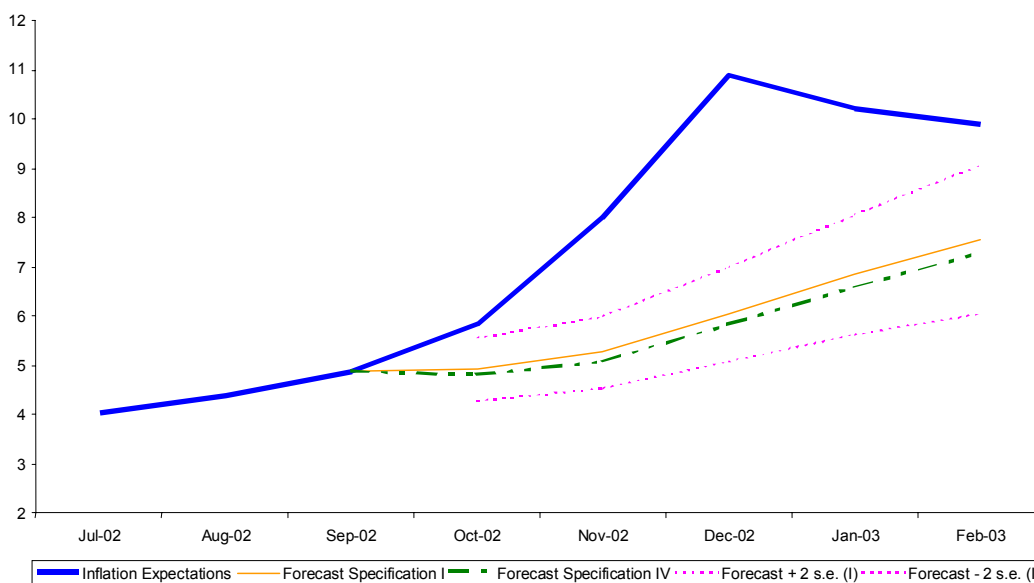


Figure 5b
Recursive Estimates of the Coefficient on Exchange Rate Change



The particularity of the transition period to the new government is clear when we estimate the four specifications with a sample ending in September 2002, and forecast inflation expectations for the following five months. Figure 6 shows these out-of-sample forecasts. All of them point to an increase in inflation expectations, but are significantly below actual inflation expectations, in spite of a adjusted R-squared greater than 0.90.

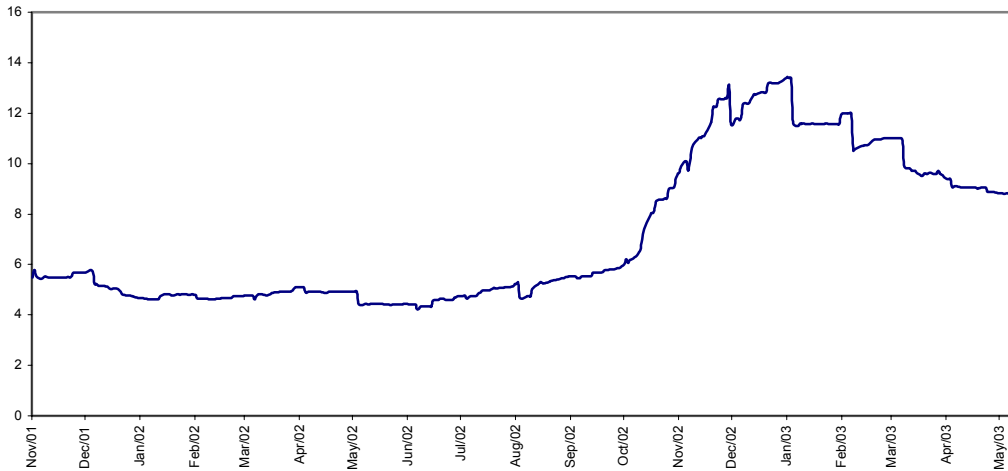
Figure 6
Actual and Forecast Values for Inflation Expectations (% p.a.)



Since November 2001, the Central Bank has published 12-month ahead inflation expectations, which is recorded in Figure 7. In the estimations we have used so far, we have employed a weighted average of the expectations for the end of the current and following years. We can see that inflation expectations have reverted since the beginning of 2003.

In summary, although the actual inflation rate has been above the upper limit of the tolerance interval in 2001 and 2002, the inflation-targeting regime has been successful in anchoring expectations. This is a consequence of the credibility gains that the Central Bank has achieved since the implementation of the inflation-targeting regime. Only in the fourth quarter of 2002 did inflation expectations depart from the targets as a result of the confidence crisis. Credibility, however, is still under construction as it takes time to achieve.

Figure 7
12-Month Ahead Inflation Expectations (%p.a.)



3.3. Change in inflation dynamics

As the inflation-targeting regime is supposed to affect the formation of inflation expectations, we can consider the possibility that the backward-looking component of price adjustments has become less important. The share of backward-looking firms could have become smaller and/or firms could place less weight on past inflation when adjusting prices. This would reduce the degree of persistence in inflation. Following Kuttner and Posen (1999), we estimate a simple aggregate supply curve for the low inflation period to assess if the inflation-targeting regime was accompanied by some structural change.¹⁹ Using monthly data, we regress the inflation rate (measured by the IPCA) on its own lags, the unemployment rate²⁰ (lagged one period), and the exchange rate change in 12 months (lagged one period). The sample starts in 1995:07 and ends in 2002:12.²¹ The regression also includes dummy variables that multiply some of the mentioned regressors for the inflation-targeting period. The inflation rate and exchange rate change are measured in monthly terms.

¹⁹ It is important to stress that the structural model of the Central Bank used for inflation forecasting employs quarterly data, and has a different specification: for example, it includes a forward-looking term for inflation, and a term for output gap instead of unemployment rate.

²⁰ We use seasonally adjusted unemployment rate (criterion seven days) produced by IBGE. The results are qualitatively similar if we use the raw data or the unemployment rate estimated according to the criterion of thirty days.

²¹ Since exchange rate change refers to the 12-month change, the sample starts 12 months after the start of the stabilization to avoid the inclusion of data from the high inflation period.

Table 6 shows a specification that includes only one lag for inflation, and another that includes two. It is important to stress two aspects of the estimation. First, dummies for the inflation targeting period that multiply unemployment and the exchange rate do not enter significantly; therefore, they were excluded from the estimation. Second, we have included a dummy variable that assumes the value of one for the last three months of 2002. Without adding this dummy, the residuals in both specifications present serial correlation. Actually, the end of 2002 is a very peculiar period, which it is difficult to be fitted by a simple Phillips curve. Figure 8 shows monthly inflation since 1994. It is evident the change that took place in the mentioned period.

Table 6
Estimation of Aggregate Supply Curve
Dependent Variable: Monthly Inflation Rate - 1995:08 - 2002:12

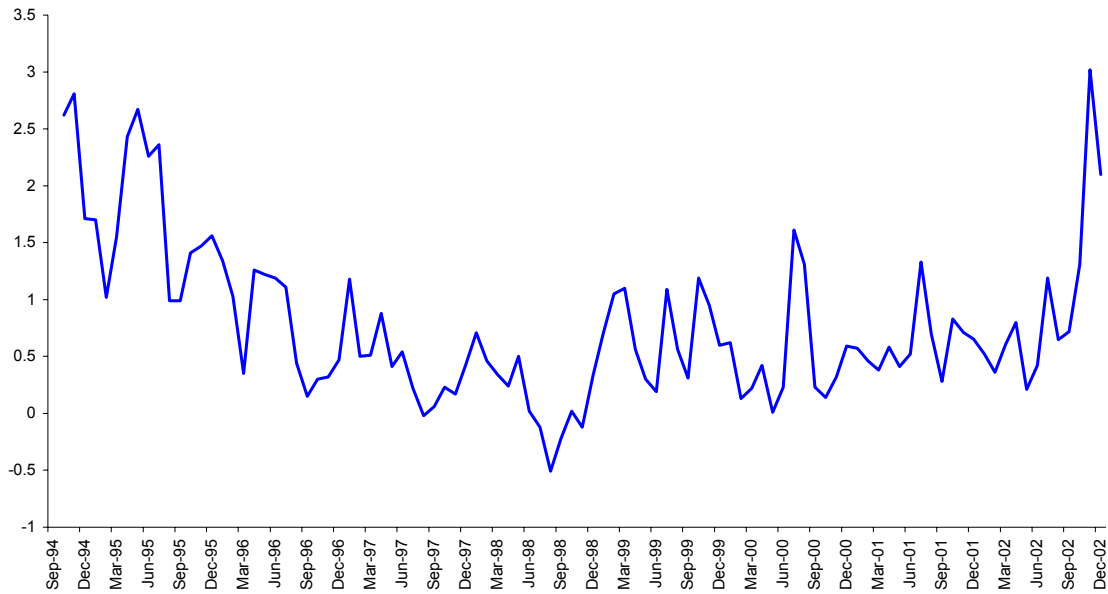
Regressors	Coefficients and standard errors	
	I	II
Constant	0.65* (0.36)	0.70* (0.36)
Dummy constant ¹	0.34*** (0.12)	0.51*** (0.14)
Inflation rate(t-1)	0.56*** (0.11)	0.62*** (0.15)
Inflation rate(t-2)		-0.09 (0.14)
Dummy inflation rate (t-1) ¹	-0.46*** (0.17)	-0.43** (0.19)
Dummy inflation rate (t-2) ¹		-0.35* (0.20)
Unemployment (t-1)	-0.08 (0.05)	-0.09* (0.05)
Exchange rate change (t-1) (twelve-month average)	0.08* (0.04)	0.09** (0.04)
Dummy 2002Q4 ²	1.42*** (0.26)	1.47*** (0.25)
R-squared	0.5593	0.6022
Adjusted R-squared	0.5271	0.5624
LM Test for Autocorrelation of Residuals (p-values)		
1 lag	0.6646	0.7022
4 lags	0.2218	0.3599

Notes: Standard error in parentheses. *, ** and *** indicate the coefficient is significant at the 10%, 5%, and 1% level, respectively. Since exchange rate change refers to the 12-month change, the sample starts in 1995:07 to avoid the inclusion of data b

¹Dummy has value one in the inflation-targeting period (1999:06-2002:12), and zero otherwise. It multiplies the associated variable.

²Dummy has value one in 2002:10 - 2002:12, and zero otherwise.

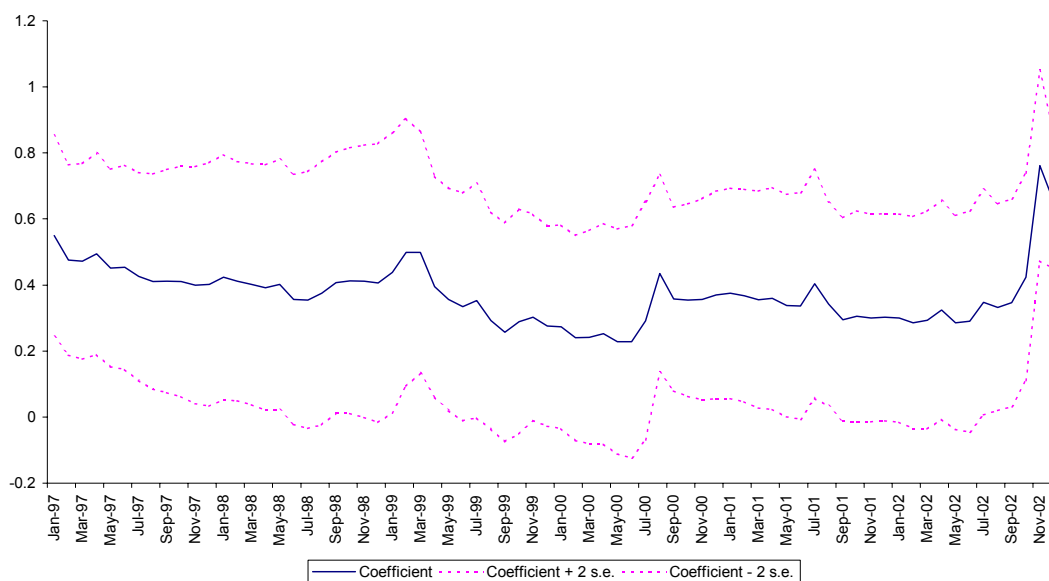
Figure 8
 IPCA - Monthly Change - 1994:09 - 2002:12



From the estimated coefficients on the dummy variables in both specifications, we can conclude there is a statistically significant change in the constant and in the coefficient on lagged inflation in the inflation-targeting period. The point estimate of the autoregressive coefficient in specification I falls from 0.56 to 0.10 in the inflation targeting period (0.56 minus 0.46). This estimation indicates that there has been a substantial reduction in the degree of inflation persistence after inflation targeting was adopted. This implies a lower output cost to curb inflationary pressures and to reduce average inflation.²² Using recursive estimation for the lagged coefficient, however, we do not observe a reduction in the coefficient. We have also used time-varying coefficient estimation for the simple aggregate supply equation. We regress the inflation rate on its own lag, the unemployment rate, and the exchange rate change, setting the coefficient on the lagged inflation as time varying. The filtered values for the coefficient are drawn in Figure 9. We can see a decreasing tendency for the coefficient, except for the last months of 2002, when it rises rapidly.

²² Note that, although the constant in the regression is higher in the inflation-targeting period, the unconditional expected inflation (up to a constant referring to the natural unemployment rate) is equal to 1.5 and 1.1 for the periods before and after inflation-targeting adoption using the first specification, and 1.5 and 1.0 employing the second specification.

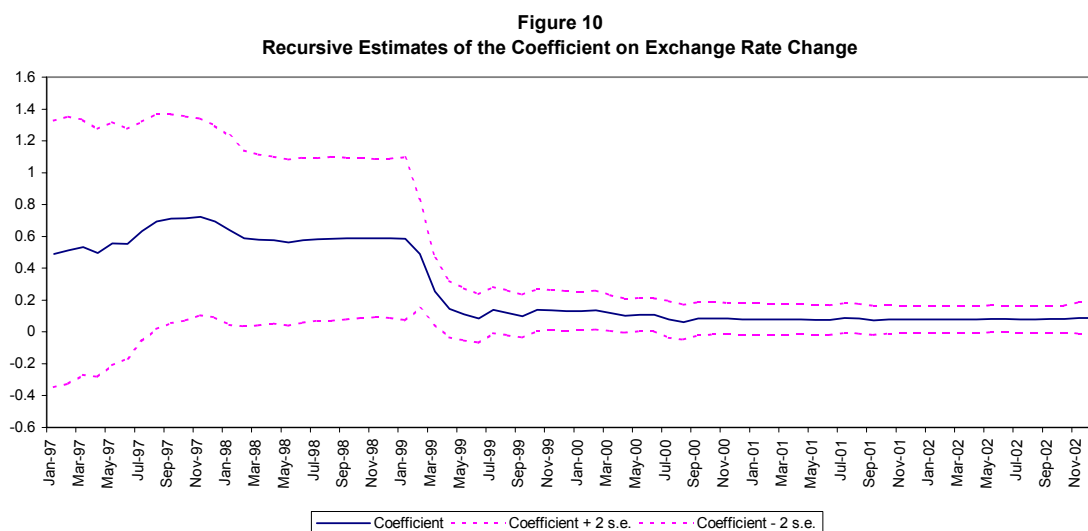
Figure 9
Time-Varying Coefficients for Lagged Inflation Term - Filtered Estimates



The coefficient on lagged unemployment is negative and statistically significant or close to that. Its p-values are 0.130 and 0.068 in specifications I and II, respectively. Since the coefficient value is about -0.08, a one-percentage point increase in the unemployment rate decreases the inflation rate by 1.0 percentage points when measured in annual terms. Considering the indirect effects via inflation inertia, the total effect on inflation over a year is 1.95 p.p. and 1.06 p.p. for the whole sample and for the inflation-targeting period, respectively (the periods have different degrees of inflation persistence).

The exchange rate change also enters significantly. The coefficient is around 0.08, which, considering the lagged inflation term, generates a 12-month pass-through of 18% and 9% for the whole sample and for the inflation-targeting period, respectively. As in the unemployment case, the smaller pass-through in the recent period is a consequence of the lower degree of persistence in inflation. However, using a recursive estimation for the coefficient on the exchange rate change, we observe a decline in the pass-through with the adoption of the floating exchange regime in January 1999 (Figure 10). This result is in line with those in Muinhos (2001), which shows a structural break in the pass-through coefficient when the exchange rate regime changed. The estimations in that paper are conducted using a linear and a non-linear Phillips curve. The pass-through in the same quarter of the exchange rate change fell from more than 50% to less

than 10%. In the following section, we present some estimation for the pass-through using a VAR model and the structural model.



4. Exchange rate changes and pass-through

Dealing with exchange rate volatility has been one of the main challenges to the inflation-targeting regime in emerging markets economies. Compared to industrialized economies, emerging markets seem to be more sensitive to the effects of financial crises than other countries. Exchange rate market volatility generates frequent revisions of inflation rate expectations and may result in non-fulfillment of inflation targets. As a general rule, the actions of the central bank should not move the exchange rate to artificial or unsustainable levels. Nevertheless, the central bank may react to exchange rate movements to curb the resulting inflationary pressures and to reduce the financial impact on dollar denominated assets and liabilities on firms' balance sheets.

Regarding the financial problems associated with exchange rate volatility, Hausmann, Panizza and Stein (2001) have argued that all countries that are not able to issue debt in their own currency are more vulnerable to the impact of currency mismatches in their balance sheets. Those mismatches are even more dramatic in a financially integrated world, where rumors of financial problems may lead to capital flight that might produce self-fulfilling crises, generating a bad equilibrium. As observed by Schmidt-Hebel and Werner (2002), the level of reserves works as insurance

against the occurrence of this bad equilibrium. If all the burden of the adjustment to capital outflows during financial crisis is supported by exchange rate depreciation, the country might have a backward bending exchange rate supply curve with no equilibrium being possible. They justify foreign exchange rate intervention based on the following reasons: (i) facilitate adjustment to sudden reductions in capital inflows; (ii) accumulate reserves; (iii) reduce excessive exchange rate volatility (associated with lower liquidity in foreign exchange markets); and (iv) raise the supply of exchange rate insurance.

Given the problems associated with exchange rate volatility and the pros of intervention, the Central Bank of Brazil, like those in other emerging markets economies, including some that have also adopted inflation targeting, has actually been implementing a dirty-floating exchange rate policy.²³ Interventions are made as transparent as possible in order to avoid the concern expressed by Mishkin (2000) that intervention may hinder the credibility of monetary policy as the public may realize that stabilizing the exchange rate takes precedence over promoting price stability as a policy objective.

In Brazil, the volatility of the exchange rate has been considerable. From 1999:07 through 2002:12, the exchange rate (monthly average) depreciated on average 1.8% per month, with a standard error of 4.2 and a coefficient of variation (ratio of standard error to average) of 2.4. The inflationary pressures resulting from exchange rate depreciation are more related to the magnitude of the depreciation than to the pass-through coefficient.²⁴ According to the structural model of the Central Bank, the pass-through to market prices inflation, as a percentage of the observed depreciation, is 12% after one year of the depreciation. The pass-through to administered prices is estimated to be 25%, resulting in a pass-through of about 16% for the headline IPCA. In line with these estimates, between January 2001 and December 2002, the price of the dollar moved from R\$ 1.95 to R\$ 3.64, implying an increase of 86.7%. In the same period, IPCA rose 21.2%. In this sense, Brazil seems to be closer to the lower end of the estimates done by Hausmann, Panizza and Stein (2001). They estimated the pass-through accumulated in 12 months for more than 40 countries and found a value below 5% for G-7 countries, and, on the other extreme, figures above 50% for countries like Mexico, Paraguay and Poland.

²³ Calvo and Reinhart (2002) discuss the limited empirical evidence of truly free-floating countries.

²⁴ See Goldfajn and Werlang (2000) for the reasons for the low pass-through in the Brazilian January 1999 devaluation episode.

We can also use a VAR estimation with monthly data to assess the pass-through and the importance of exchange rate shocks to the variability of inflation. We use two specifications. Both include output, the spread of EMBI+ (Emerging Markets Bond Index Plus) over Treasury bonds,²⁵ the exchange rate (monthly average), and the interest rate (Selic rate - monthly average). Output is measured by seasonally-adjusted industrial production. The inclusion of the EMBI+ was necessary because it is a good indicator for financial crises, both foreign crises (Mexico, Asia, Russia, Argentina) and domestic (beginning of 1999), which have an important impact on interest rates. In the first specification, we use administered and market prices as variables, whereas in the second we use the consumer price index (IPCA) instead. We estimate the model in levels, that is, using I(1) and I(0) regressors instead of using the error correction representation.²⁶ The estimation is consistent and captures possible existing cointegration relationships (Sims, Stock, and Watson, 1990; Watson, 1994). The variables used are the log-levels of output, administered prices, market prices, IPCA and the exchange rate, and the levels of the EMBI+ spread and the interest rate.²⁷ We use a Cholesky decomposition with the following order in the first specification: output, administered prices, market prices, EMBI+, exchange rate, and interest rate. In the second specification, the consumer price index substitutes for administered and market prices. Since the financial variables react more rapidly to shocks, we include them after output and price. We also conduct the estimate using the interest rate before the exchange rate. The results are very similar. The sample includes all the period of the Real Plan, from September 1994 through December 2002.²⁸ In order to capture possible changes in the second semester of 2002, we also estimate the impulse responses using a sample that ends in 2002:06.

Figure 11 shows the impulse responses to a one standard deviation of exchange rate shock. It presents the point estimates for the samples ending in June 2002 and December 2002, and the two-standard-error bands for the former sample, which were estimated using a Monte Carlo experiment with 1000 draws. The values shown are

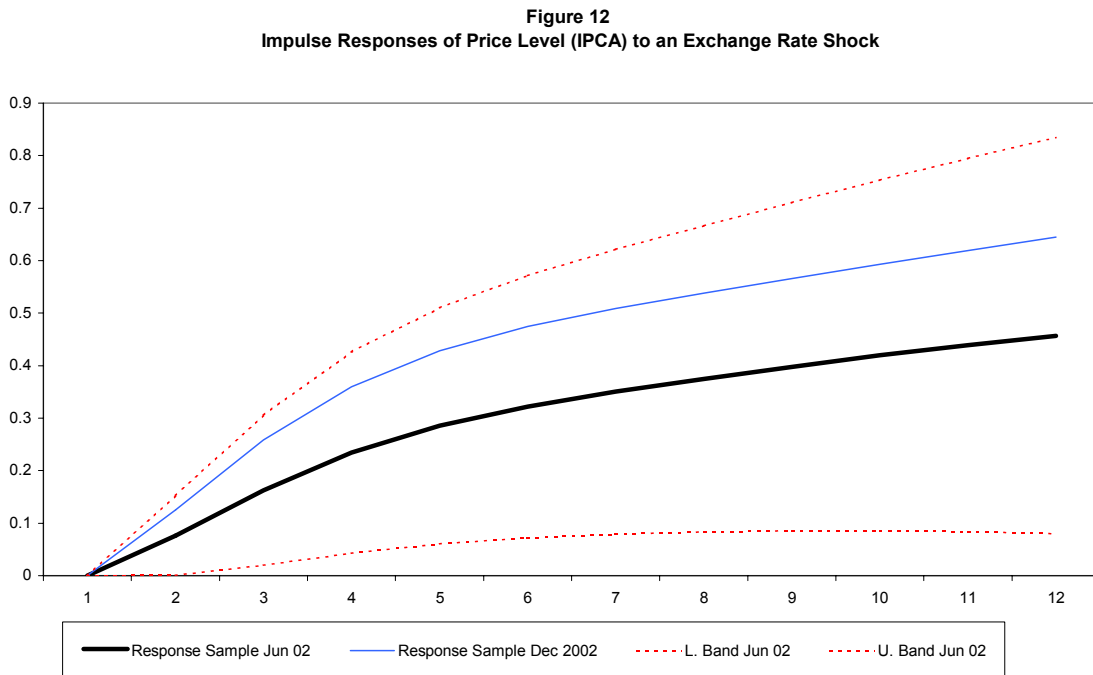
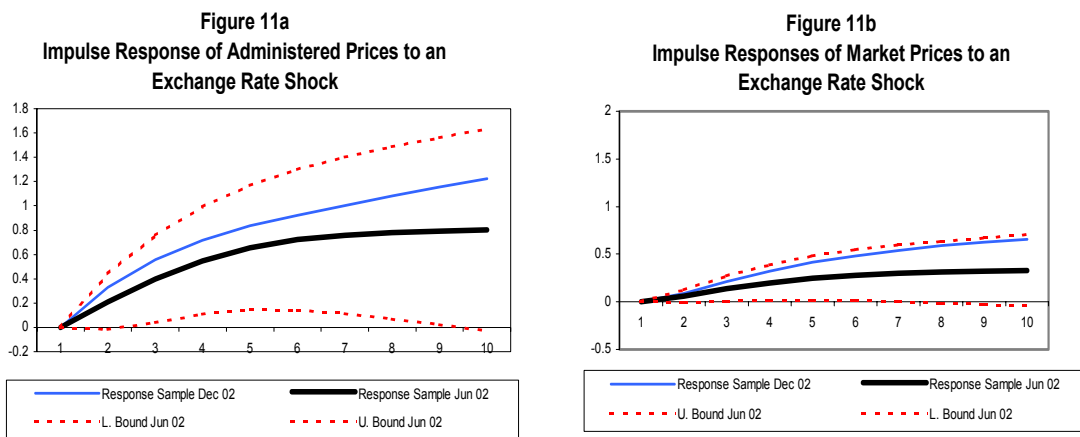
²⁵ We use EMBI from Sept./1994 through Dec./1998, and EMBI+ after that.

²⁶ According to augmented Dickey-Fuller unit root tests, we can accept the presence of a unit root for the log-levels of IPCA, administered prices, market prices, exchange rate, interest rate, and for the level of EMBI+ spread. We reject the presence of unit root for the monthly change of those variables, and for the level of interest rate.

²⁷ The lag length of the VAR estimations was chosen according to Schwarz criterion, but we test for the presence of serial correlation of residuals, and increase the number of lags when necessary to obtain no serial correlated residuals. We have used four lags for both specifications.

²⁸ July and August 1994 were excluded because the price indexes were still "contaminated" by the previous high inflation period. In this case, the start of the sample is adjusted according to the number of lags used.

percentage points. We stress two aspects. First, the responses of administered and market prices are positive and statistically significant, and the increase in administered prices is greater than that of market. Second, when the sample includes the last months of 2002, we notice an increase in the responses, but still inside the confidence interval of the June sample, which is a kind of stability test for impulse response. Figure 12 shows the responses in the case of the specification that includes the IPCA instead of the administered and market prices.²⁹ Again we see an increase in the response in the last months of 2002, but still inside the bands of the June sample.



²⁹ The response of price level stabilizes if we consider a 24-month horizon.

Using the full sample, the exchange rate increases initially 2.6%, reaching a total of 4.3% in the second month, and starts decreasing after that. The rise of both administered prices and market prices reaches a maximum in the eighth month. The values of the pass-through are presented in Table 7, which records the results for the sample ending in December 2002. We estimate the pass-through as the ratio of the price increase in a 12-month horizon to the value of the exchange rate shock. If we consider the value of the exchange shock in the first month, the pass-through is 32.7% for the administered prices, and 17% for the market prices (19.7% and 7.8%, respectively, if we use the shorter sample, which ends in June 2002). Considering the value of the exchange rate shock in the second month, the pass-through is 22% and 11% (12.1% and 4.8% with the shorter sample). The pass-through for the administered prices is 1.9 higher than that for the market prices (2.5 with the shorter sample). The pass-through to IPCA was estimated at 17.9 and 11.4% (14.1% and 8.4% with the shorter sample), considering the first and second month shock, respectively.

Table 7
Pass-Through Considering Different Specifications:
Ratio of Price Change (12-month horizon) to an Exchange Rate Shock

Value of Exchange Rate Shock Considered	Sample					
	Real Plan Period			Inflation-Targeting Period		
	Administered Prices	Market Prices	IPCA	Administered Prices	Market Prices	IPCA
Pass-Through Using the First Month Exchange Rate Shock	32.9%	17.0%	17.9%	20.0%	11.3%	13.1%
Pass-Through Using the Second Month Exchange Rate Shock	22.3%	11.0%	11.4%	18.8%	10.3%	11.5%
Ratio of Pass-Through Administered Prices to Market Prices			1.9			1.8

Since the inflation-targeting regime may have represented a structural change in the relationships, and the exchange rate regime is different from the majority of the previous period, we estimate a VAR model for the first three years of inflation targeting (1999:07-2002:12). However, the sample size is too short, and the response of administered and market prices is positive, but not statistically significant using a two-standard-error band (they are significant in the first months if we use a one-standard-

error band). To compare with the Real Plan period, however, we show the point estimates in Table 7.³⁰ One can see a decrease in the pass-through specially using the first month exchange rate shock in both administered and market prices³¹. These results using a VAR model are in line with those in the recursive estimation of the aggregate supply curve shown in subsection 3.3 and again in Muinhos (2001).

Therefore, exchange rate volatility is an important source of inflation variability. The design of the inflation-targeting framework has to take into account this issue to avoid that a possible non-fulfillment of inflation targets as a result of exchange rate volatility may reduce the credibility of the central bank.

5. Conclusions

The inflation-targeting regime in Brazil is relatively new, but has shown to be important in achieving low levels of inflation even in a context of large shocks. The presence of a central bank committed to the achievement of pre-announced inflation targets has worked as an important coordinator of expectations and generated a more stable inflation scenario. The pursuit of this goal and the significant increase in transparency that has marked the action of monetary policy have contributed to the development of the awareness of the importance of the commitment to price stability.

During this period, the regime has faced many challenges, including the construction of credibility – which is still a work in progress – the change in relative prices, and exchange rate volatility. Dealing with these challenges has required a large effort by the Central Bank, which itself has also learned substantially and has improved the system. The Central Bank has reacted strongly to inflation expectations, consistent with the inflation-targeting framework. Market expectations have remained under controlled, even in the presence of inflationary shocks. The estimations also indicate a reduction in the degree of inflation persistence.

Even with the confidence crisis in the second half of 2002, the inflation targeting framework supported the burden of the crisis, allowing the nominal exchange rate to adjust and the interest rate to increase to prevent inflation from persisting in high levels

³⁰ We have used two lags in both specifications. With IPCA and three lags, however, the values are smaller for the pass-through: 9.6% and 4.8%.

³¹ With the sample only until June 2002, all the pass-throughs were smaller, and there was no difference between the Real plan and inflation-targeting periods.

in the economy. In view of the intensity and magnitude of the shocks that hit the Brazilian economy in 2001 and 2002, the cost in terms of output losses of a policy aimed at completely offsetting these shocks in a short period of time and keeping inflation within the tolerance intervals would have been significantly higher. The Brazilian experience has been a successful stress test for the inflation targeting framework.

References

- Banco Central do Brasil (2003), "Open-Letter sent by Banco Central do Brasil's Governor, Henrique de C. Meirelles, to the Minister of Finance, Antonio Palocci Filho", available at www.bcb.gov.br
- Bogdanski, Joel, Alexandre A. Tombini, and Sérgio R. C. Werlang (2000), "Implementing Inflation Targeting in Brazil", Working Paper Series no. 1, Central Bank of Brazil, July.
- Calvo, Guillermo, and Carmen Reinhart (2002), "Fear of Floating", *Quarterly Journal of Economics*, 117(2): 379-408, May.
- Clarida, Richard, Jordi Galí, and Mark Gertler (1998), "Monetary Policy Rules in Practice: Some International Evidence", *European Economic Review*, 42: 1033-1067.
- Clarida, Richard, Jordi Galí, and Mark Gertler (2000), "Monetary Policy Rules and Macroeconomic Stability: Evidence and Some Theory", *Quarterly Journal of Economics*, Feb.
- Favero, Carlo A., and Francesco Giavazzi (2002), "Why are Brazil's Interest Rates so High", mimeo.
- Fraga, Arminio, Ilan Goldfajn, and André Minella (2003), "Inflation Targeting in Emerging Market Economies", forthcoming in Gertler, Mark and Kenneth Rogoff (eds.), NBER Macroeconomics Annual 2003, Volume 18, MIT Press.
- Freitas, Paulo S. de, André Minella, and Gil Riella (2002), "Metodologia de Cálculo da Inércia Inflacionária e dos Efeitos dos Choques dos Preços Administrados", Notas Técnicas do Banco Central do Brasil no. 22, July. (English translation in Banco Central do Brasil (2002), *Inflation Report*, 4(2):123-128, June)
- Goldfajn, Ilan, and Sergio R.C. Werlang (2000) "The Pass-Through from Depreciation to Inflation: A Panel Study", Banco Central do Brasil, Working Paper Series n°5, Brasília
- Hausmann, Ricardo, Ugo Panizza, and Ernesto Stein (2001), "Why do Countries Float the Way They Float", *Journal of Development Economics*, 66(2): 387-414
- Kuttner, Kenneth N., and Adam S. Posen (1999), "Does Talk Matter After All? Inflation Targeting and Central Bank Behavior", mimeo
- Minella, André, Paulo S. de Freitas, Ilan Goldfajn, and Marcelo K. Muinhos (2002), "Inflation Targeting in Brazil: Lessons and Challenges", Central Bank of Brazil, Working Paper Series no. 53, Nov.
- Mishkin, Frederic (2000), "Inflation Targeting in Emerging Market Countries", NBER Working Paper Series 7618, Cambridge MA

- Muinhos, Marcelo K. (2001), "Inflation Targeting in an Open Financially Integrated Emerging Economy: the Case of Brasil", Working Paper Series no.26, Central Bank of Brazil, Aug.
- Schmidt-Hebel, Klaus, and Alejandro Werner (2002), "Inflation Targeting in Brazil, Chile, and Mexico: Performance, Credibility and the Exchange Rate", Working Paper no. 171, Central Bank of Chile, July
- Silva, Marcelo E. A. da, and Marcelo S. Portugal (2002), "Inflation Targeting in Brazil: an Empirical Evaluation", mimeo.
- Sims, Christopher A., James H. Stock, and Mark W. Watson (1990), "Inference in Linear Time Series Models with Some Unit Roots", *Econometrica*, 58 (1): 113-144, Jan.
- Taylor, John B. (1993), "Discretion versus Policy Rules in Practice", *Carnegie-Rochester Conference Series on Public Policy*, 39:195-214.
- Watson, Mark W. (1994), "Vector Autoregression and Cointegration", In: Engle, R. F. and D. L. McFadden (eds.), *Handbook of Econometrics*, vol. IV, Amsterdam, Elsevier, pp. 2844-2915.

Banco Central do Brasil

Trabalhos para Discussão

Os Trabalhos para Discussão podem ser acessados na internet, no formato PDF,
no endereço <http://www.bc.gov.br>

Working Paper Series

Working Papers in PDF format can be downloaded from: <http://www.bc.gov.br>

- | | | |
|----|--|-----------|
| 1 | Implementing Inflation Targeting in Brazil
Joel Bogdanski, Alexandre Antonio Tombini and Sérgio Ribeiro da Costa Werlang | July/2000 |
| 2 | Política Monetária e Supervisão do Sistema Financeiro Nacional no Banco Central do Brasil
Eduardo Lundberg | Jul/2000 |
| | Monetary Policy and Banking Supervision Functions on the Central Bank
Eduardo Lundberg | July/2000 |
| 3 | Private Sector Participation: a Theoretical Justification of the Brazilian Position
Sérgio Ribeiro da Costa Werlang | July/2000 |
| 4 | An Information Theory Approach to the Aggregation of Log-Linear Models
Pedro H. Albuquerque | July/2000 |
| 5 | The Pass-Through from Depreciation to Inflation: a Panel Study
Ilan Goldfajn and Sérgio Ribeiro da Costa Werlang | July/2000 |
| 6 | Optimal Interest Rate Rules in Inflation Targeting Frameworks
José Alvaro Rodrigues Neto, Fabio Araújo and Marta Baltar J. Moreira | July/2000 |
| 7 | Leading Indicators of Inflation for Brazil
Marcelle Chauvet | Set/2000 |
| 8 | The Correlation Matrix of the Brazilian Central Bank's Standard Model for Interest Rate Market Risk
José Alvaro Rodrigues Neto | Set/2000 |
| 9 | Estimating Exchange Market Pressure and Intervention Activity
Emanuel-Werner Kohlscheen | Nov/2000 |
| 10 | Análise do Financiamento Externo a uma Pequena Economia
Aplicação da Teoria do Prêmio Monetário ao Caso Brasileiro: 1991–1998
Carlos Hamilton Vasconcelos Araújo e Renato Galvão Flôres Júnior | Mar/2001 |
| 11 | A Note on the Efficient Estimation of Inflation in Brazil
Michael F. Bryan and Stephen G. Cecchetti | Mar/2001 |
| 12 | A Test of Competition in Brazilian Banking
Márcio I. Nakane | Mar/2001 |

13	Modelos de Previsão de Insolvência Bancária no Brasil Marcio Magalhães Janot	Mar/2001
14	Evaluating Core Inflation Measures for Brazil Francisco Marcos Rodrigues Figueiredo	Mar/2001
15	Is It Worth Tracking Dollar/Real Implied Volatility? Sandro Canesso de Andrade and Benjamin Miranda Tabak	Mar/2001
16	Avaliação das Projeções do Modelo Estrutural do Banco Central do Brasil Para a Taxa de Variação do IPCA Sergio Afonso Lago Alves	Mar/2001
	Evaluation of the Central Bank of Brazil Structural Model's Inflation Forecasts in an Inflation Targeting Framework Sergio Afonso Lago Alves	July/2001
17	Estimando o Produto Potencial Brasileiro: uma Abordagem de Função de Produção Tito Nícias Teixeira da Silva Filho	Abr/2001
	Estimating Brazilian Potential Output: a Production Function Approach Tito Nícias Teixeira da Silva Filho	Aug/2002
18	A Simple Model for Inflation Targeting in Brazil Paulo Springer de Freitas and Marcelo Kfoury Muinhos	Apr/2001
19	Uncovered Interest Parity with Fundamentals: a Brazilian Exchange Rate Forecast Model Marcelo Kfoury Muinhos, Paulo Springer de Freitas and Fabio Araújo	May/2001
20	Credit Channel without the LM Curve Victorio Y. T. Chu and Márcio I. Nakane	May/2001
21	Os Impactos Econômicos da CPMF: Teoria e Evidência Pedro H. Albuquerque	Jun/2001
22	Decentralized Portfolio Management Paulo Coutinho and Benjamin Miranda Tabak	June/2001
23	Os Efeitos da CPMF sobre a Intermediação Financeira Sérgio Mikio Koyama e Márcio I. Nakane	Jul/2001
24	Inflation Targeting in Brazil: Shocks, Backward-Looking Prices, and IMF Conditionality Joel Bogdanski, Paulo Springer de Freitas, Ilan Goldfajn and Alexandre Antonio Tombini	Aug/2001
25	Inflation Targeting in Brazil: Reviewing Two Years of Monetary Policy 1999/00 Pedro Fachada	Aug/2001
26	Inflation Targeting in an Open Financially Integrated Emerging Economy: the Case of Brazil Marcelo Kfoury Muinhos	Aug/2001

27	Complementaridade e Fungibilidade dos Fluxos de Capitais Internacionais Carlos Hamilton Vasconcelos Araújo e Renato Galvão Flôres Júnior	Set/2001
28	Regras Monetárias e Dinâmica Macroeconômica no Brasil: uma Abordagem de Expectativas Racionais Marco Antonio Bonomo e Ricardo D. Brito	Nov/2001
29	Using a Money Demand Model to Evaluate Monetary Policies in Brazil Pedro H. Albuquerque and Solange Gouvêa	Nov/2001
30	Testing the Expectations Hypothesis in the Brazilian Term Structure of Interest Rates Benjamin Miranda Tabak and Sandro Canesso de Andrade	Nov/2001
31	Algumas Considerações sobre a Sazonalidade no IPCA Francisco Marcos R. Figueiredo e Roberta Blass Staub	Nov/2001
32	Crises Cambiais e Ataques Especulativos no Brasil Mauro Costa Miranda	Nov/2001
33	Monetary Policy and Inflation in Brazil (1975-2000): a VAR Estimation André Minella	Nov/2001
34	Constrained Discretion and Collective Action Problems: Reflections on the Resolution of International Financial Crises Arminio Fraga and Daniel Luiz Gleizer	Nov/2001
35	Uma Definição Operacional de Estabilidade de Preços Tito Nícias Teixeira da Silva Filho	Dez/2001
36	Can Emerging Markets Float? Should They Inflation Target? Barry Eichengreen	Feb/2002
37	Monetary Policy in Brazil: Remarks on the Inflation Targeting Regime, Public Debt Management and Open Market Operations Luiz Fernando Figueiredo, Pedro Fachada and Sérgio Goldenstein	Mar/2002
38	Volatilidade Implícita e Antecipação de Eventos de Stress um Teste para o Mercado Brasileiro Frederico Pechir Gomes	Mar/2002
39	Opções sobre Dólar Comercial e Expectativas a Respeito do Comportamento da Taxa de Câmbio Paulo Castor de Castro	Mar/2002
40	Speculative Attacks on Debts, Dollarization and Optimum Currency Areas Aloisio Araujo and Márcia Leon	Abr/2002
41	Mudanças de Regime no Câmbio Brasileiro Carlos Hamilton V. Araújo e Getúlio B. da Silveira Filho	Jun/2002
42	Modelo Estrutural com Setor Externo: Endogenização do Prêmio de Risco e do Câmbio Marcelo Kfoury Muinhos, Sérgio Afonso Lago Alves e Gil Riella	Jun/2002

43	The Effects of the Brazilian ADRs Program on Domestic Market Efficiency Benjamin Miranda Tabak and Eduardo José Araújo Lima	June/2002
44	Estrutura Competitiva, Produtividade Industrial e Liberação Comercial no Brasil Pedro Cavalcanti Ferreira e Osmani Teixeira de Carvalho Guillén	Jun/2002
45	Optimal Monetary Policy, Gains from Commitment, and Inflation Persistence André Minella	Aug/2002
46	The Determinants of Bank Interest Spread in Brazil Tarsila Segalla Afanasieff, Priscilla Maria Villa Lhacer and Márcio I. Nakane	Aug/2002
47	Indicadores Derivados de Agregados Monetários Fernando de Aquino Fonseca Neto e José Albuquerque Júnior	Sep/2002
48	Should Government Smooth Exchange Rate Risk? Ilan Goldfajn and Marcos Antonio Silveira	Sep/2002
49	Desenvolvimento do Sistema Financeiro e Crescimento Econômico no Brasil: Evidências de Causalidade Orlando Carneiro de Matos	Set/2002
50	Macroeconomic Coordination and Inflation Targeting in a Two-Country Model Eui Jung Chang, Marcelo Kfoury Muinhos and Joanílio Rodolpho Teixeira	Sep/2002
51	Credit Channel with Sovereign Credit Risk: an Empirical Test Victorio Yi Tson Chu	Sep/2002
52	Generalized Hyperbolic Distributions and Brazilian Data José Fajardo and Aquiles Farias	Sep/2002
53	Inflation Targeting in Brazil: Lessons and Challenges André Minella, Paulo Springer de Freitas, Ilan Goldfajn and Marcelo Kfoury Muinhos	Nov/2002
54	Stock Returns and Volatility Benjamin Miranda Tabak and Solange Maria Guerra	Nov/2002
55	Componentes de Curto e Longo Prazo das Taxas de Juros no Brasil Carlos Hamilton Vasconcelos Araújo e Osmani Teixeira de Carvalho de Guillén	Nov/2002
56	Causality and Cointegration in Stock Markets: the Case of Latin America Benjamin Miranda Tabak and Eduardo José Araújo Lima	Dec/2002
57	As Leis de Falência: uma Abordagem Econômica Aloisio Araujo	Dez/2002
58	The Random Walk Hypothesis and the Behavior of Foreign Capital Portfolio Flows: the Brazilian Stock Market Case Benjamin Miranda Tabak	Dec/2002
59	Os Preços Administrados e a Inflação no Brasil Francisco Marcos R. Figueiredo e Thaís Porto Ferreira	Dez/2002

60	Delegated Portfolio Management Paulo Coutinho and Benjamin Miranda Tabak	Dec/2002
61	O Uso de Dados de Alta Frequência na Estimação da Volatilidade e do Valor em Risco para o Ibovespa João Maurício de Souza Moreira e Eduardo Facó Lemgruber	Dez/2002
62	Taxa de Juros e Concentração Bancária no Brasil Eduardo Kiyoshi Tonooka e Sérgio Mikio Koyama	Fev/2003
63	Optimal Monetary Rules: the Case of Brazil Charles Lima de Almeida, Marco Aurélio Peres, Geraldo da Silva e Souza and Benjamin Miranda Tabak	Feb/2003
64	Medium-Size Macroeconomic Model for the Brazilian Economy Marcelo Kfoury Muinhos and Sergio Afonso Lago Alves	Feb/2003
65	On the Information Content of Oil Future Prices Benjamin Miranda Tabak	Feb/2003
66	A Taxa de Juros de Equilíbrio: uma Abordagem Múltipla Pedro Calhman de Miranda e Marcelo Kfoury Muinhos	Fev/2003
67	Avaliação de Métodos de Cálculo de Exigência de Capital para Risco de Mercado de Carteiras de Ações no Brasil Gustavo S. Araújo, João Maurício S. Moreira e Ricardo S. Maia Clemente	Fev/2003
68	Real Balances in the Utility Function: Evidence for Brazil Leonardo Soriano de Alencar and Márcio I. Nakane	Feb/2003
69	r-filters: a Hodrick-Prescott Filter Generalization Fabio Araújo, Marta Baltar Moreira Areosa and José Alvaro Rodrigues Neto	Feb/2003
70	Monetary Policy Surprises and the Brazilian Term Structure of Interest Rates Benjamin Miranda Tabak	April/2003
71	On Shadow-Prices of Banks in Real-Time Gross Settlement Systems Rodrigo Penaloza	April/2003
72	O Prêmio pela Maturidade na Estrutura a Termo das Taxas de Juros Brasileiras Ricardo Dias de Oliveira Brito, Angelo Mont'Alverne Duarte e Osmani Teixeira de C. Guillen	Maio/2003
73	Análise de Componentes Principais de Dados Funcionais – Uma Aplicação às Estruturas a Termo de Taxas de Juros Getúlio Borges da Silveira e Octavio Bessada	Maio/2003
74	Aplicação do Modelo de Black, Derman & Toy à Precificação de Opções Sobre Títulos de Renda Fixa Octavio Manuel Bessada Lion, Carlos Alberto Nunes Cosenza e César das Neves	Maio/2003
75	Brazil's Financial System: Resilience to Shocks, No Currency Substitution, But Struggling to Promote Growth Ilan Goldfajn, Katherine Hennings and Helio Mori	June/2003

