



BANCO CENTRAL DO BRASIL

Working Paper Series **249**

Directed Clustering Coefficient as a Measure of Systemic Risk in Complex Banking Networks

B. M. Tabak, M. Takami, J. M. C. Rocha and D. O. Cajueiro

August, 2011

ISSN 1518-3548
CGC 00.038.166/0001-05

Working Paper Series	Brasília	n. 249	Aug.	2011	p. 1-17
----------------------	----------	--------	------	------	---------

Working Paper Series

Edited by Research Department (Depep) – E-mail: workingpaper@bcb.gov.br

Editor: Benjamin Miranda Tabak – E-mail: benjamin.tabak@bcb.gov.br

Editorial Assistant: Jane Sofia Moita – E-mail: jane.sofia@bcb.gov.br

Head of Research Department: Adriana Soares Sales – E-mail: adriana.sales@bcb.gov.br

The Banco Central do Brasil Working Papers are all evaluated in double blind referee process.

Reproduction is permitted only if source is stated as follows: Working Paper n. 249.

Authorized by Carlos Hamilton Vasconcelos Araújo, Deputy Governor for Economic Policy.

General Control of Publications

Banco Central do Brasil

Secre/Surel/Cogiv

SBS – Quadra 3 – Bloco B – Edifício-Sede – 1º andar

Caixa Postal 8.670

70074-900 Brasília – DF – Brazil

Phones: +55 (61) 3414-3710 and 3414-3565

Fax: +55 (61) 3414-3626

E-mail: editor@bcb.gov.br

The views expressed in this work are those of the authors and do not necessarily reflect those of the Banco Central or its members.

Although these Working Papers often represent preliminary work, citation of source is required when used or reproduced.

As opiniões expressas neste trabalho são exclusivamente do(s) autor(es) e não refletem, necessariamente, a visão do Banco Central do Brasil.

Ainda que este artigo represente trabalho preliminar, é requerida a citação da fonte, mesmo quando reproduzido parcialmente.

Consumer Complaints and Public Enquiries Center

Banco Central do Brasil

Secre/Surel/Diate

SBS – Quadra 3 – Bloco B – Edifício-Sede – 2º subsolo

70074-900 Brasília – DF – Brazil

Fax: +55 (61) 3414-2553

Internet: <http://www.bcb.gov.br/?english>

Directed clustering coefficient as a measure of systemic risk in complex banking networks

B. M. Tabak¹ M. Takami² J. M. C. Rocha³ D. O. Cajueiro⁴

The Working Papers should not be reported as representing the views of the Banco Central do Brasil. The views expressed in the papers are those of the author(s) and not necessarily reflect those of the Banco Central do Brasil.

Abstract

Recent literature has focused on the study of systemic risk in complex networks. It is clear now, after the crisis of 2008, that the aggregate behavior of the interaction among the agents is not straightforward and it is very difficult to predict. Contributing to this debate, this paper shows that the directed clustering coefficient may be used as a measure of systemic risk in complex networks. Furthermore, using data from the Brazilian bank interbank network, we show that the directed clustering coefficient is negatively correlated with domestic interest rates.

Key Words: dynamic topology, clusters, interbank markets, systemic risk.

PACS: 64.60.aq, 89.65.Gh, 87.23.Ge

¹Banco Central do Brasil, Research Department. E-mail: benjamin.tabak@bcb.gov.br.

²Banco Central do Brasil, SECRE.

³Universidade de Brasilia, Department of Economics.

⁴Universidade de Brasilia, Department of Economics and INCT.

1 Introduction

Recent literature has focused on the issue of modeling, measuring and avoiding systemic risk in complex networks Vespignani [2010]. The literature is divided in general approaches such as Watts [2002], Lorenz et al. [2009], Buldyrev et al. [2010], Cajueiro and Andrade [2010a,b,c] and techniques that deal with specific kinds of networks such as technological networks Motter [2004], Albert et al. [2004], Crucitti et al. [2004], Huang et al. [2008], social and biological networks Dodds and Watts [2004] and financial and economic networks Eisenberg and Noe [2001], Boss et al. [2004b], Elsinger et al. [2006], Iori et al. [2006]. In the particular case of financial and economic systems, based on the events that took place in the crisis of 2008, it is clear that the aggregate behavior of the interaction among the agents is not straightforward and it is very difficult to predict Schweitzer et al. [2009a]. Furthermore, the challenging of understanding aggregate behavior of economic and financial systems require tools belonging to the field of econometrics of times series, complex systems, game theory and agent-based models Schweitzer et al. [2009b].

Banking lending networks are one of the most important financial systems that are subjected to systemic risk. In fact, small shocks constrained only to a few banks can be spread by contagion and affect the entire system Allen and Gale [2000]. These authors show that in a banking system with a homogeneous topology, the possibility of financial contagion depends strongly on the completeness of the structure of the system. It is worth mentioning that due to the development of the theory of complex networks Albert and Barabasi [2002], Boccaletti et al. [2006], Costa et al. [2007], it has been possible to improve our knowledge on banking networks. Now, knowing that banking networks have complex structure and dynamics Boss et al. [2004a], Müller [2003], Inaoka et al. [2004], Cajueiro and Tabak [2008], Wan et al. [2006], Masi et al. [2006], Lublòy [2006], Soramaki et al. [2007], models of heterogeneous banking networks have replaced the homogeneous ones. For instance, exploring the interconnections among banks in the Italian overnight market, Iori et al. [2008] have investigated potential implications of the current institutional system on the banking stability. In Nier et al. [2007], simulated banking systems show how systemic risk depends on their structures.

In this context, this paper shows that the directed clustering coefficient Fagiolo [2007] may be used as a measure of systemic risk in complex networks. In particular, exploring data from the Brazilian bank interbank network, we show that the way that banks make clusters of lending relationships have different impact in terms of systemic risk.

The remainder of this paper is structured in the following way. Section

2 revisits the measure known as directed clustering coefficient. Section 3 describes the data of the Brazilian interbank market used in this paper. Section 4 presents the main results of the paper. In particular, we show that the directed clustering coefficient is negatively correlated with interest rate changes and it varies strongly among banks. Finally, section 5 presents the main conclusions of this work.

2 Clustering coefficients for directed networks

In Fagiolo [2007], the standard clustering coefficient Watts and Strogatz [1998] used for unweighted and undirected networks were generalized for *binary directed networks* and *weighted directed networks*. Consider the following notation: Let A and W be respectively the directed adjacency matrix of the network and directed matrix of weights that represents the network. Let also d_i^{in} , d_i^{out} and $d_i^{\text{tot}} = d_i^{\text{in}} + d_i^{\text{out}}$, be respectively the in-degree of node i , the out-degree of node i the total degree of node i . Furthermore, let $d_i^{\leftrightarrow} = \sum_{j \neq i} a_{ij}a_{ji} = A_{ii}^2$.

In binary directed networks, the clustering coefficient of node i for a binary network may be defined as the ratio between all the possible triangles formed by i and the number of all possible triangles that could be formed

$$C_i^D(A) = \frac{(A + A^T)_{ii}^3}{2[d_i^{\text{tot}}(d_i^{\text{tot}} - 1) - 2d_i^{\leftrightarrow}]} \quad (1)$$

This clustering coefficient defined for the unweighted case can be easily extended to the weighted case by replacing the number of directed triangles formed with its weighted counterpart

$$\tilde{C}_i^D(W) = \frac{[\hat{W} + (\hat{W}^T)]_{ii}^3}{2[d_i^{\text{tot}}(d_i^{\text{tot}} - 1) - 2d_i^{\leftrightarrow}]} \quad (2)$$

where $\hat{W} = W^{[\frac{1}{3}]} = [w_{ij}^{\frac{1}{3}}]$.

However, as pointed in Fagiolo [2007], these two definitions (1) and (2) are not enough to characterize the richness of patterns that take place in a complex directed network. In fact, equations (1) and (2) treat all the possible triangles as if they were the same. However, in directed graphs, edges that point in different directions should be interpreted differently. Therefore, four more definitions are necessary, which are represented in Figure 1:

(a) cycle, when there is a cyclical relation among i and its neighbors. In this case, the associated clustering coefficient for the binary case is

$$C_i^{cyc} = \frac{(A)_{ii}^3}{d_i^{in} d_i^{out} - d_i^{\leftrightarrow}} \quad (3)$$

and for the weighted case is given by

$$\tilde{C}_i^{cyc} = \frac{(\hat{W})_{ii}^3}{d_i^{in} d_i^{out} - d_i^{\leftrightarrow}}. \quad (4)$$

(b) Middleman, when one of the neighbor of node i holds two outward edges and the other holds two inward edges. In this case, the associated clustering coefficient for the binary case is

$$C_i^{mid} = \frac{(AA^T A)_{ii}}{d_i^{in} d_i^{out} - d_i^{\leftrightarrow}} \quad (5)$$

and for the weighted case is given by

$$\tilde{C}_i^{mid} = \frac{(\hat{W}\hat{W}^T\hat{W})_{ii}}{d_i^{in} d_i^{out} - d_i^{\leftrightarrow}}. \quad (6)$$

(c) In, when i holds two inward edges. In this case, the associated clustering coefficient for the binary case is

$$C_i^{in} = \frac{(A^T A^2)_{ii}}{d_i^{in} (d_i^{in} - 1)} \quad (7)$$

and for the weighted case is given by

$$\tilde{C}_i^{in} = \frac{(\hat{W}^T \hat{W}^2)_{ii}}{d_i^{in} (d_i^{in} - 1)}. \quad (8)$$

(d) Out, when i holds two outward edges. In this case, the associated clustering coefficient for the binary case is

$$C_i^{out} = \frac{(A^2 A^T)_{ii}}{d_i^{out} (d_i^{out} - 1)} \quad (9)$$

and for the weighted case is given by

$$\tilde{C}_i^{out} = \frac{(\hat{W}^2 \hat{W}^T)_{ii}}{d_i^{out} (d_i^{out} - 1)}. \quad (10)$$

Both unweighed and weighted clustering coefficients are interesting. Although the former uses less information, it counts the number of triangles of a given type. The latter uses more information, but it is strongly affected by the largest weights. Since our network is directed weighed we study here the

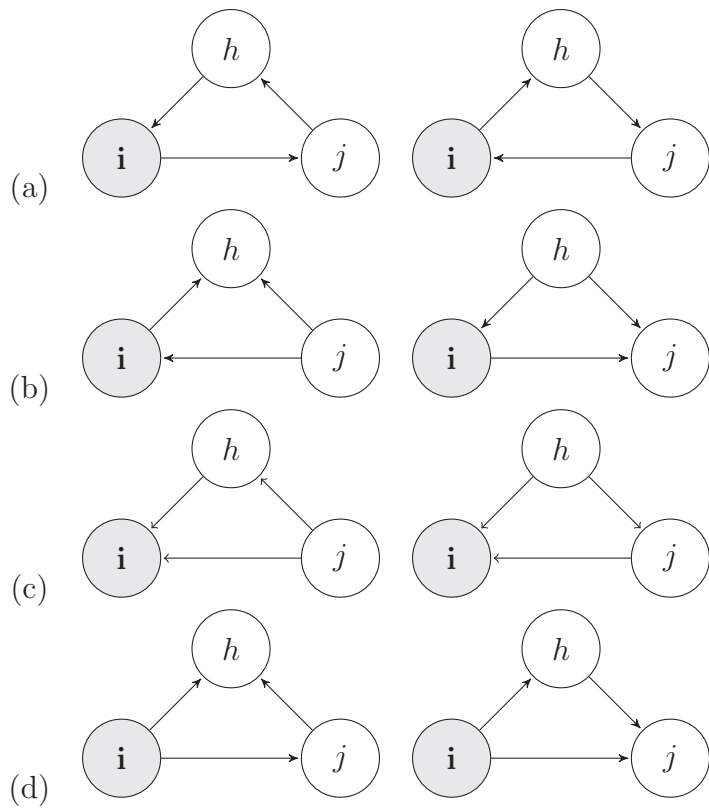


Figure 1: Representations of the triangles that can arise in a directed network: (a) cycle; (b) middleman; (c) in; (d) out.

dynamics of the cycles, middle, In and Out clustering coefficients using the weighed formulation.

In the following discussion, we assume that an edge that arrives to node i coming from node j mean that bank i borrowed money from node and bank j lent money to bank i . Note that in terms of systemic risk, these four patterns presented in figure 1 offer different interpretations.

The first type of clustering that we present is the \tilde{C}_i^{cyc} , which is shown in Figure 1(a). In this case bank i lends to bank j , which lends to bank h , which in its turn lends back to bank i . Therefore, large values do not represent a higher risk for the banking system.

The \tilde{C}_i^{mid} is presented in Figure 1(b) and represents the case in which the counterpart of bank i , bank h and j , are either borrowing or lending from the other two banks. In this case, large values imply a higher systemic risk. Figure 1(c) presents the case in which \tilde{C}_i^{in} bank i is borrowing from both banks. Therefore, it represents a situation in which bank i is increasing the risk of the banking system. If bank i fails then it will not pay some or all the loans that it has made and subsequently the other two banks may not be able to meet their own obligations with each other, increasing the losses within the system.

In Figure 1(d) we present the case in which \tilde{C}_i^{out} bank i is increasing it's own exposure at it is lending to two counterparties. If one of these bank fails, as it may not pay the other bank the losses suffered from bank i may increase. Therefore, if this clustering coefficient is high we can say that bank i has a large exposure and higher risk within the interbank network. Overall, higher values for the coefficients \tilde{C}_i^{mid} and \tilde{C}_i^{in} imply higher systemic risk and higher values of \tilde{C}_i^{out} imply higher exposure of bank i .

3 Data

All financial institutions report their counterpart in the interbank market and their size exposure. We have collected data on daily loans made between financial institutions within the Brazilian financial system for all banks and financial institutions that have exposures in the interbank market, for the period from January 2004 to November 2007.

Our sample, which consists of 86 banks and 23 non-bank financial institutions, allows us to analyze interbank lending between banks that do not belong to the same financial institution. The sample comprises public, private domestic and foreign banks. The role of these types of bank is examined through analyzing their relative importance in the interbank network.

	Mean	Std. Dev.	Skewness	Kurtosis	Jarque-Bera	p-value
\tilde{C}^{cyc}						
Public	2.64×10^{-5}	3.60×10^{-5}	1.3846	3.9403	16.7490	0.0002
Domestic	9.33×10^{-5}	1.32×10^{-5}	-0.7146	4.0066	5.9846	0.0502
Foreign	8.37×10^{-5}	1.78×10^{-5}	-0.1479	1.7767	3.1021	0.2120
\tilde{C}^{mid}						
Public	7.31×10^{-5}	6.57×10^{-5}	0.9123	2.8967	6.5410	0.0380
Domestic	6.75×10^{-4}	9.88×10^{-5}	-0.5120	4.8929	9.0701	0.0107
Foreign	9.76×10^{-4}	5.57×10^{-5}	1.2324	5.2336	21.6681	0.0000
\tilde{C}^{in}						
Public	8.54×10^{-5}	8.78×10^{-5}	1.2668	3.8146	13.8711	0.0010
Domestic	1.89×10^{-4}	3.87×10^{-5}	-0.9146	2.5583	6.9347	0.0312
Foreign	3.45×10^{-4}	3.59×10^{-4}	-1.2701	3.9728	14.4901	0.0007
\tilde{C}^{out}						
Public	2.81×10^{-5}	6.95×10^{-5}	3.1776	12.7655	265.8519	0.0000
Domestic	2.09×10^{-4}	6.74×10^{-5}	0.6892	2.5788	4.0685	0.1308
Foreign	5.35×10^{-4}	9.26×10^{-5}	1.9484	6.9723	60.6385	0.0000

Table 1: Descriptive statistics of the averaged clustering coefficients for the period of the sample and for each type of bank.

4 Results

We now study how frequent are the patterns of lending presented in figure 1 in the Brazilian interbank market. Since there is a relation between systemic risk and each pattern of lending, we want to know how each type of bank influences the systemic risk of the interbank market.

Table 1 presents the descriptive statistics of the averaged clustering coefficients for the period of the sample and for each type of bank. It is worth noticing that the distribution of these figures is not normal, which implies in a large heterogeneity between banks.

In Figure 2, we also show the evolution of these clustering coefficients over time reinforcing that different bank types have different strategies when dealing with the interbank market. Furthermore, although the clustering coefficients vary strongly over time, most of them vary around their mean value.

We also test for the correlation of clustering coefficients with domestic interest rates. In theory banks can change their exposure due to changes in interest rates. We find evidence of a negative correlation between the \tilde{C}^{mid}

coefficient and interest rates changes (CDI), which imply that as interest rates increases banks decrease their relative exposure within the network. The correlation coefficients for all, private, public and foreign banks with interest rates are -0.257423 , -0.302239 , -0.136349 and -0.370078 , respectively.

Therefore, we also find that the effects are different depending on ownership. These results suggests that banks pursue different strategies within the interbank network, which may be due to diversity in obtaining funds domestically and internationally.

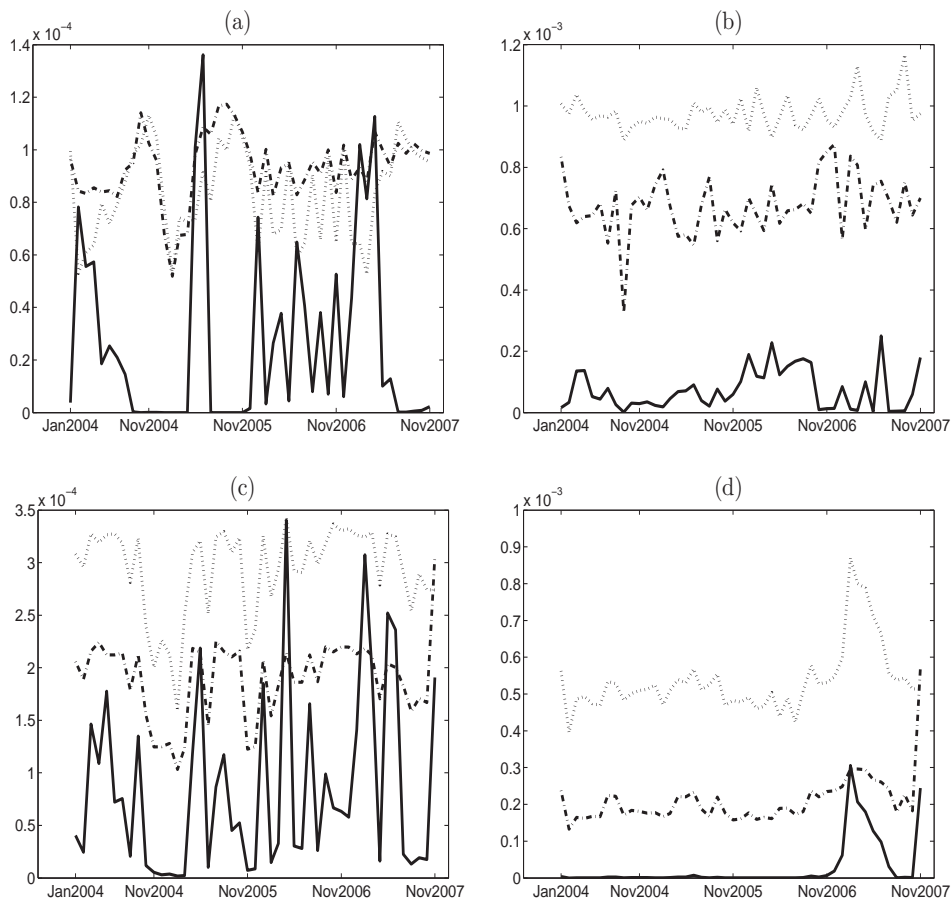


Figure 2: The types of banks are identified by the following notation: Public (solid), Domestic (dashes) and Foreign (dot-dashes). Different panels represent different clustering coefficients: (a) Cycle; (b) Middle; (c) In; (d) Out.

5 Conclusions

In this paper, we have interpreted the directed clustering coefficients as a measure of systemic risk. We have evaluated these clustering coefficients for the Brazilian interbank market data and we have shown that these measures vary strongly over the banks and they are negatively correlated with interesting rate change. Therefore, banks change their risk exposure with changes in interest rates. Overall, systemic risk within this market is very limited.

References

- R. Albert and A. L. Barabasi. Statistical mechanics of complex networks. *Reviews of Modern Physics*, 74:47–97, 2002.
- R. Albert, I. Albert, and G. L. Nakarado. Structural vulnerability of the north american power grid. *Physical Review E*, 69:025103, 2004.
- F. Allen and D. Gale. Financial contagion. *The Journal of Political Economy*, 108:1–33, 2000.
- S. Boccaletti, V. Latora, Y. Moreno, M. Chavez, and D. U. Hwang. Complex networks: structure and dynamics. *Physics Reports*, 424:175–308, 2006.
- M. Boss, H. Elsinger, M. Summer, and S. Thurner. Network topology of the interbank market. *Quantitative Finance*, 4:677–684, 2004a.
- M. Boss, M. Summer, and S. Thurner. Contagion flow through banking networks. *Lecture notes in computer science*, 3038:1070–1077, 2004b.
- S. V. Buldyrev, R. Parshani, G. Paul, H. E. Stanley, and S. Havlin. Catastrophic cascade of failures in interdependent networks. *Nature*, 464:1025–1028, 2010.
- D. O. Cajueiro and R. F. S. Andrade. Controlling self-organized criticality in abelian sandpiles. *Physical Review E*, 81:015102, 2010a.
- D. O. Cajueiro and R. F. S. Andrade. Controlling self-organized criticality in complex networks. *European Physical Journal B*, 77:291–296, 2010b.
- D. O. Cajueiro and R. F. S. Andrade. Dynamical programming approach for controlling the directed abelian dhar-ramaswamy model. *Physical Review E*, 82:031108, 2010c.
- D. O. Cajueiro and B. M. Tabak. The role of banks in the brazilian interbank market: Does bank type matter? *Physica A: Statistical Mechanics and its Applications*, 387(27):6825 – 6836, 2008.
- L. D. Costa, F. A. Rodrigues, G. Travieso, and P. R. Villas Boas. Characterization of complex networks: a survey of measurements. *Advances in Physics*, 56:167–242, 2007.
- P. Crucitti, V. Latora, and M. Marchiori. Model for cascading failures in complex networks. *Physical Review E*, 69:045104, 2004.

- P. S. Dodds and D. J. Watts. Universal behavior in a generalized model of contagion. *Physical Review Letters*, 92:218701, 2004.
- L. Eisenberg and T. H. Noe. Systemic risk in financial systems. *Management Science*, 47:236–249, 2001.
- E. Elsinger, A. Lehar, and M. Summer. Risk assessment for banking systems. *Management Science*, 52:1301–1314, 2006.
- G. Fagiolo. Clustering in complex directed networks. *Physical Review E*, 76:026107, 2007.
- L. Huang, Y. C. Lai, and G. Chen. Understanding and preventing cascading breakdown in complex clustered networks. *Physical Review E*, 78:036116, 2008.
- H. Inaoka, H. Takayasu, T. Shimizu, T. Ninomiya, and K. Taniguchi. Self-similarity of banking network. *Physica A*, 339:621–634, 2004.
- G. Iori, S. Jafarey, and F. G. Padilha. Systemic risk on the interbank market. *Journal of Economic Behavior and Organization*, 61:525–542, 2006.
- Giulia Iori, Giulia De Masi, Ovidiu Vasile Precup, Giampaolo Gabbi, and Guido Caldarelli. A network analysis of the italian overnight money market. *Journal of Economic Dynamics and Control*, 32(1):259 – 278, 2008.
- J. Lorenz, S. Battiston, and F. Schweitzer. Systemic risk in a unifying framework for cascading processes on networks. *European Physical Journal B*, 71:441–460, 2009.
- A. Lublòy. Topology of the hungarian large-value transfer system. *Working Paper of the Magyar Nemzeti Bank*, 2006.
- G. De Masi, G. Iori, and G. Caldarelli. Fitness model for the italian interbank money market. *Physical Review E*, 74:066112, 2006.
- A. E. Motter. Cascade control and defence in complex networks. *Physical Review Letters*, 93:098701, 2004.
- J. Müller. Two approaches to assess contagion in the interbank market. *Working Paper of the Swiss National Banking*, 2003.
- E. Nier, J. Yang, T. Yorulmazer, and A. Alentorn. Network models and financial stability. *Journal of Economic Dynamics and Control*, 31:2033–2060, 2007.

- F. Schweitzer, G. Fagiolo, D. Sornette, F. Vega-Redondo, A. Vespignani, and D. R. White. Economic networks: The new challenges. *Science*, 326: 422–425, 2009a.
- F. Schweitzer, G. Fagiolo, D. Sornette, F. Vega-Redondo, and D. R. White. Economic networks: what do we know and what do we need to know? *Advances in Complex Systems*, 12:407–422, 2009b.
- K. Soramaki, M. L. Bech, J. Arnold, R. J. Glass, and W. E. Beyeler. The topology of interbank payment flows. *Physica A*, 379:317–333, 2007.
- A. Vespignani. The fragility of interdependency. *Nature*, 464:984–985, 2010.
- Y. S. Wan, Z. Chen, and Z. R. Liu. Modeling the two-power-law degree distribution of banking networks. *Dynamics of Continuous Discrete and Impulsive Systems – Series B – Applications and Algorithms*, 13:441–449, 2006.
- D. J. Watts. A simple model of global cascades on random networks. *PNAS*, 2002.
- D. J. Watts and S. H. Strogatz. Collective dynamics of small world networks. *Nature*, 393:440–442, 1998.

Banco Central do Brasil

Trabalhos para Discussão

Os Trabalhos para Discussão do Banco Central do Brasil estão disponíveis para download no website
<http://www.bcb.gov.br/?TRABDISCLISTA>

Working Paper Series

The Working Paper Series of the Central Bank of Brazil are available for download at
<http://www.bcb.gov.br/?WORKINGPAPERS>

- | | | |
|------------|----------------------------------------------------------------------------------------------------------------------------------------------------------------------------------------------------------|----------|
| 211 | Pessimistic Foreign Investors and Turmoil in Emerging Markets: the case of Brazil in 2002
<i>Sandro C. Andrade and Emanuel Kohlscheen</i> | Aug/2010 |
| 212 | The Natural Rate of Unemployment in Brazil, Chile, Colombia and Venezuela: some results and challenges
<i>Tito Nícias Teixeira da Silva</i> | Sep/2010 |
| 213 | Estimation of Economic Capital Concerning Operational Risk in a Brazilian banking industry case
<i>Helder Ferreira de Mendonça, Délio José Cordeiro Galvão and Renato Falci Villela Loures</i> | Oct/2010 |
| 214 | Do Inflation-linked Bonds Contain Information about Future Inflation?
<i>José Valentim Machado Vicente and Osmani Teixeira de Carvalho Guillen</i> | Oct/2010 |
| 215 | The Effects of Loan Portfolio Concentration on Brazilian Banks' Return and Risk
<i>Benjamin M. Tabak, Dimas M. Fazio and Daniel O. Cajueiro</i> | Oct/2010 |
| 216 | Cyclical Effects of Bank Capital Buffers with Imperfect Credit Markets: international evidence
<i>A.R. Fonseca, F. González and L. Pereira da Silva</i> | Oct/2010 |
| 217 | Financial Stability and Monetary Policy – The case of Brazil
<i>Benjamin M. Tabak, Marcela T. Laiz and Daniel O. Cajueiro</i> | Oct/2010 |
| 218 | The Role of Interest Rates in the Brazilian Business Cycles
<i>Nelson F. Souza-Sobrinho</i> | Oct/2010 |
| 219 | The Brazilian Interbank Network Structure and Systemic Risk
<i>Edson Bastos e Santos and Rama Cont</i> | Oct/2010 |
| 220 | Eficiência Bancária e Inadimplência: testes de Causalidade
<i>Benjamin M. Tabak, Giovana L. Craveiro e Daniel O. Cajueiro</i> | Out/2010 |
| 221 | Financial Instability and Credit Constraint: evidence from the cost of bank financing
<i>Bruno S. Martins</i> | Nov/2010 |
| 222 | O Comportamento Cíclico do Capital dos Bancos Brasileiros
<i>R. A. Ferreira, A. C. Noronha, B. M. Tabak e D. O. Cajueiro</i> | Nov/2010 |

223	Forecasting the Yield Curve with Linear Factor Models <i>Marco Shinobu Matsumura, Ajax Reynaldo Bello Moreira and José Valentim Machado Vicente</i>	Nov/2010
224	Emerging Floaters: pass-throughs and (some) new commodity currencies <i>Emanuel Kohlscheen</i>	Nov/2010
225	Expectativas Inflacionárias e Inflação Implícita no Mercado Brasileiro <i>Flávio de Freitas Val, Claudio Henrique da Silveira Barbedo e Marcelo Verdini Maia</i>	Nov/2010
226	A Macro Stress Test Model of Credit Risk for the Brazilian Banking Sector <i>Francisco Vazquez, Benjamin M. Tabak and Marcos Souto</i>	Nov/2010
227	Uma Nota sobre Erros de Previsão da Inflação de Curto Prazo <i>Emanuel Kohlscheen</i>	Nov/2010
228	Forecasting Brazilian Inflation Using a Large Data Set <i>Francisco Marcos Rodrigues Figueiredo</i>	Dec/2010
229	Financial Fragility in a General Equilibrium Model: the Brazilian case <i>Benjamin M. Tabak, Daniel O. Cajueiro and Dimas M. Fazio</i>	Dec/2010
230	Is Inflation Persistence Over? <i>Fernando N. de Oliveira and Myrian Petrassi</i>	Dec/2010
231	Capital Requirements and Business Cycles with Credit Market Imperfections <i>P. R. Agénor, K. Alper and L. Pereira da Silva</i>	Jan/2011
232	Modeling Default Probabilities: the case of Brazil <i>Benjamin M. Tabak, Daniel O. Cajueiro and A. Luduvico</i>	Jan/2011
233	Emerging Floaters: pass-throughs and (some) new commodity currencies <i>Emanuel Kohlscheen</i>	Jan/2011
234	Cyclical Effects of Bank Capital Requirements with Imperfect Credit Markets <i>Pierre-Richard Agénor and Luiz A. Pereira da Silva</i>	Jan/2011
235	Revisiting bank pricing policies in Brazil: Evidence from loan and deposit markets <i>Leonardo S. Alencar</i>	Mar/2011
236	Optimal costs of sovereign default <i>Leonardo Pio Perez</i>	Apr/2011
237	Capital Regulation, Monetary Policy and Financial Stability <i>P.R. Agénor, K. Alper, and L. Pereira da Silva</i>	Apr/2011
238	Choques não Antecipados de Política Monetária e a Estrutura a Termo das Taxas de Juros no Brasil <i>Fernando N. de Oliveira e Leonardo Ramos</i>	Abr/2011

- 239 SAMBA: Stochastic Analytical Model with a Bayesian Approach** Apr/2011
Marcos R. de Castro, Solange N. Gouvea, André Minella, Rafael C. Santos and Nelson F. Souza-Sobrinho
- 240 Fiscal Policy in Brazil through the Lens of an Estimated DSGE Model** Apr/2011
Fabia A. de Carvalho and Marcos Valli
- 241 Macro Stress Testing of Credit Risk Focused on the Tails** May/2011
Ricardo Schechtman and Wagner Piazza Gaglianone
- 242 Determinantes do Spread Bancário Ex-Post no Mercado Brasileiro** Maio/2011
José Alves Dantas, Otávio Ribeiro de Medeiros e Lúcio Rodrigues Capelletto
- 243 Economic Activity and Financial Institutional Risk: an empirical analysis for the Brazilian banking industry** May/2011
Helder Ferreira de Mendonça, Délio José Cordeiro Galvão and Renato Falci Villela Loures
- 244 Profit, Cost and Scale Efficiency for Latin American Banks: concentration-performance relationship** May/2011
Benjamin M. Tabak, Dimas M. Fazio and Daniel O. Cajueiro
- 245 Pesquisa Trimestral de Condições de Crédito no Brasil** Jun/2011
Clodoaldo Aparecido Annibal e Sérgio Mikio Koyama
- 246 Impacto do Sistema Cooperativo de Crédito na Eficiência do Sistema Financeiro Nacional** Aug/2011
Michel Alexandre da Silva
- 247 Forecasting the Yield Curve for the Euro Region** Aug/2011
Benjamin M. Tabak, Daniel O. Cajueiro and Alexandre B. Sollaci
- 248 Financial regulation and transparency of information: first steps on new land** Aug/2011
Helder Ferreira de Mendonça, Délio José Cordeiro Galvão and Renato Falci Villela Loures