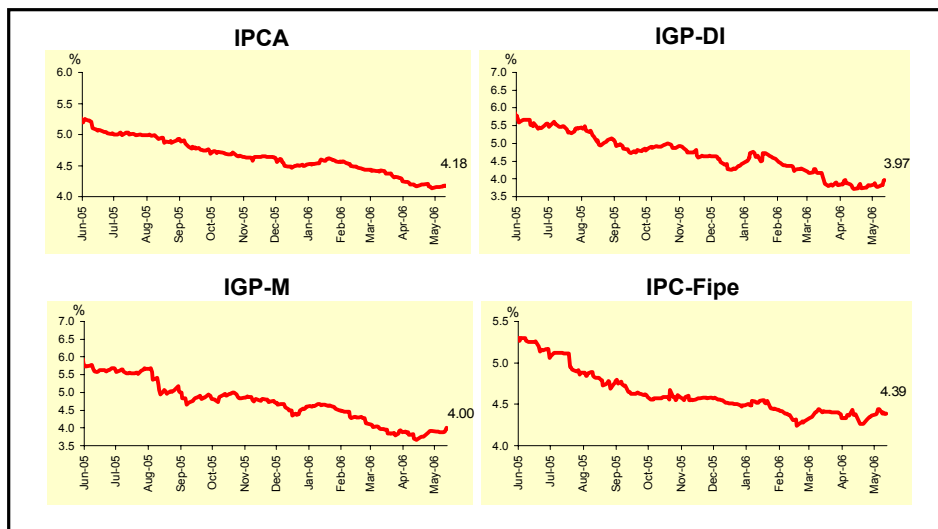


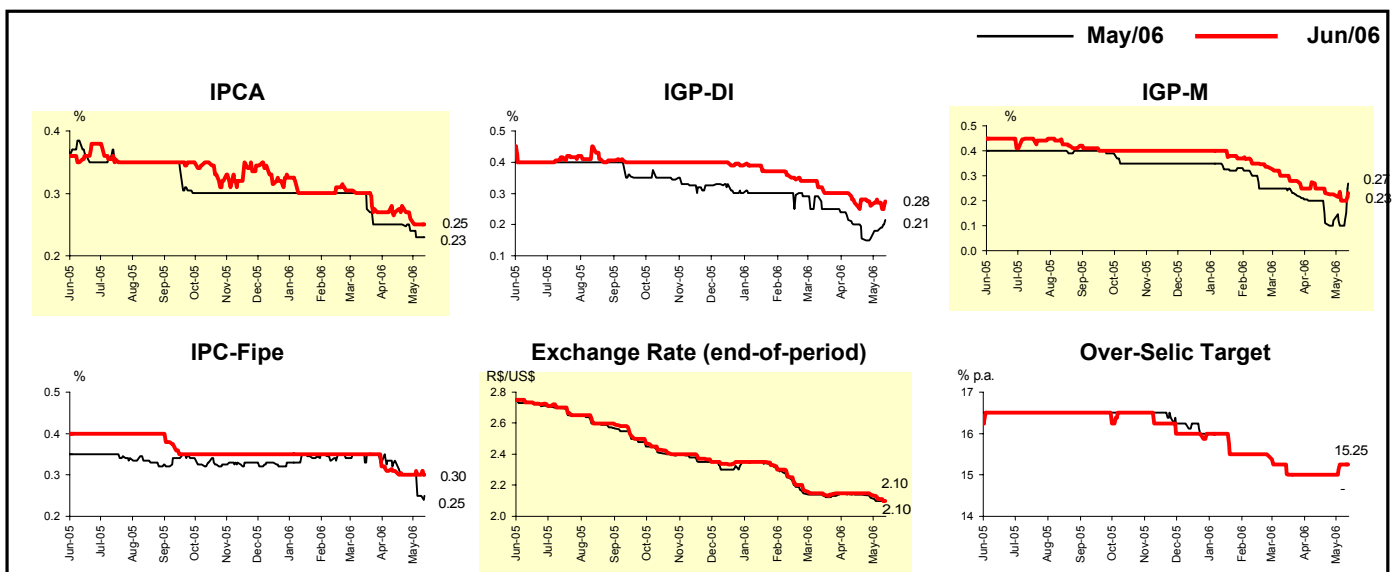
| Market Expectations | | | | |
|--|-------------|------------|-------|---------------|
| Inflation in the next 12 months - Smoothed | | | | |
| Median - Aggregate | 4 weeks ago | 1 week ago | Today | Weekly trend* |
| IPCA (%) | 4.17 | 4.15 | 4.18 | ▲ (2) |
| IGP-DI (%) | 3.71 | 3.77 | 3.97 | ▲ (1) |
| IGP-M (%) | 3.66 | 3.87 | 4.00 | ▲ (1) |
| IPC-Fipe (%) | 4.38 | 4.44 | 4.39 | ▼ (1) |

* trend since the last Market Readout; the figures in parenthesis express the number of weeks with the same behavior (increase, decrease or = stability)



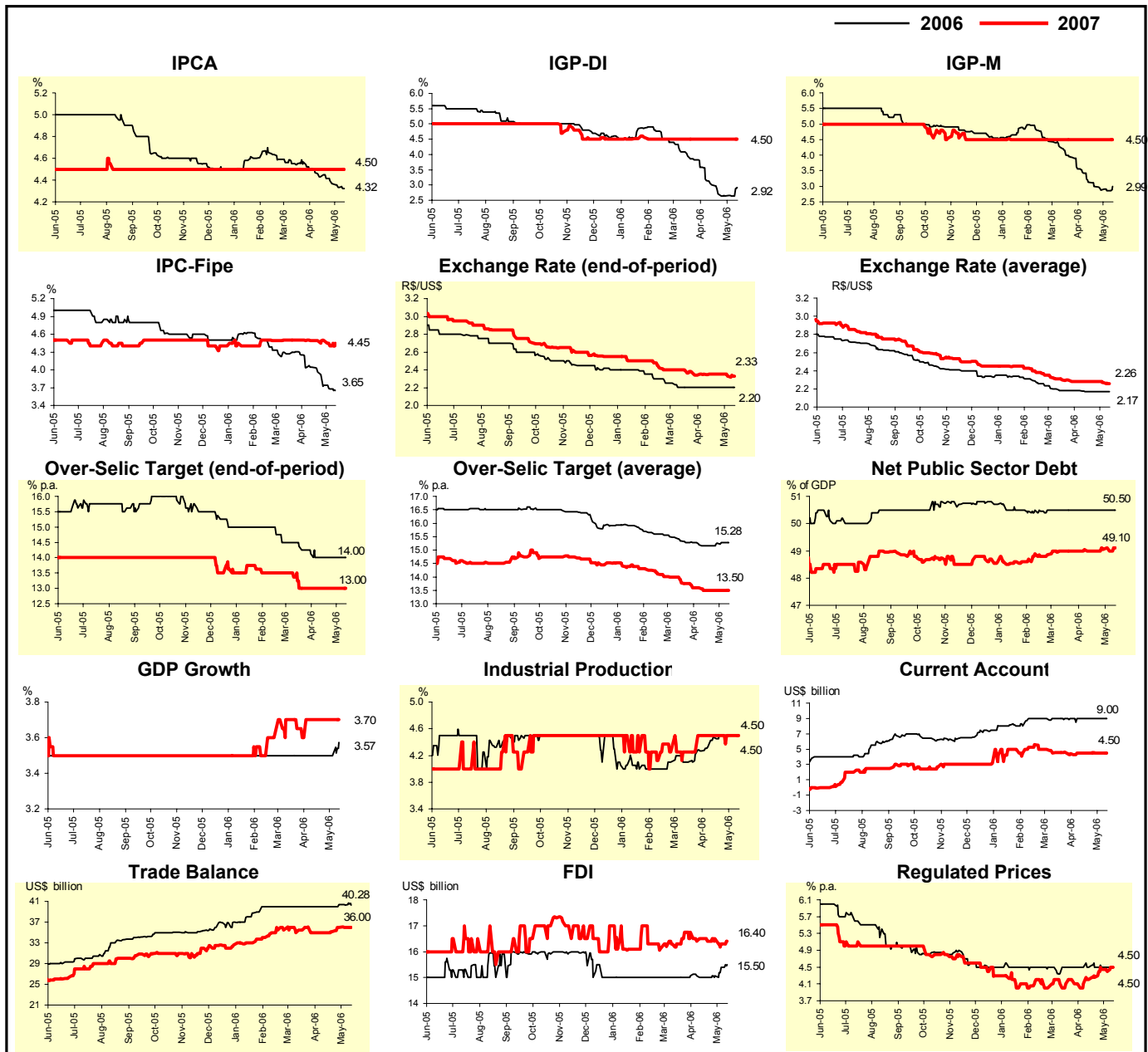
| Median - Aggregate | Market Expectations | | | | | | | |
|--|---------------------|------------|-------|---------------|-------------|------------|-------|---------------|
| | May/06 | | | | Jun/06 | | | |
| | 4 weeks ago | 1 week ago | Today | Weekly trend* | 4 weeks ago | 1 week ago | Today | Weekly trend* |
| IPCA (%) | 0.25 | 0.23 | 0.23 | = (1) | 0.27 | 0.25 | 0.25 | = (1) |
| IGP-DI (%) | 0.20 | 0.18 | 0.21 | ▲ (2) | 0.27 | 0.27 | 0.28 | ▲ (2) |
| IGP-M (%) | 0.20 | 0.10 | 0.27 | ▲ (1) | 0.25 | 0.20 | 0.23 | ▲ (1) |
| IPC-Fipe (%) | 0.34 | 0.25 | 0.25 | = (1) | 0.31 | 0.30 | 0.30 | = (3) |
| Exchange rate - end-of-period (R\$/US\$) | 2.14 | 2.10 | 2.10 | = (1) | 2.15 | 2.11 | 2.10 | ▼ (3) |
| Over-Selic Target (% p.a.) | - | - | - | = | 15.00 | 15.25 | 15.25 | = (1) |

* trend since the last Market Readout; the figures in parenthesis express the number of weeks with the same behavior (increase, decrease or = stability)



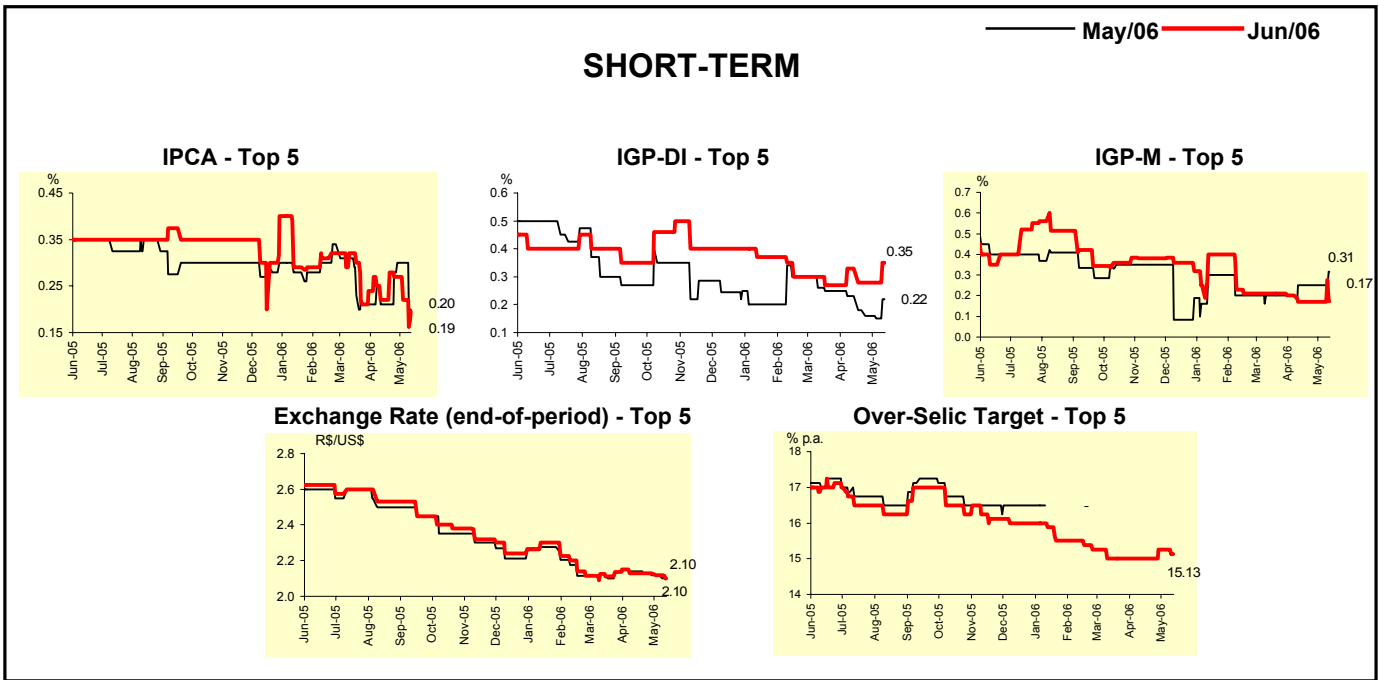
| Median - Aggregate | Market Expectations | | | | | | | |
|--|---------------------|------------|-------|---------------|-------------|------------|-------|---------------|
| | 2006 | | | | 2007 | | | |
| | 4 weeks ago | 1 week ago | Today | Weekly trend* | 4 weeks ago | 1 week ago | Today | Weekly trend* |
| IPCA (%) | 4.43 | 4.33 | 4.32 | ▼ (7) | 4.50 | 4.50 | 4.50 | ≡ (39) |
| IGP-DI (%) | 3.00 | 2.64 | 2.92 | ▲ (1) | 4.50 | 4.50 | 4.50 | ≡ (13) |
| IGP-M (%) | 3.14 | 2.86 | 2.99 | ▲ (1) | 4.50 | 4.50 | 4.50 | ≡ (25) |
| IPC-Fipe (%) | 4.05 | 3.68 | 3.65 | ▼ (4) | 4.50 | 4.40 | 4.45 | ▲ (1) |
| Exchange rate - end-of-period (R\$/US\$) | 2.20 | 2.20 | 2.20 | ≡ (9) | 2.35 | 2.33 | 2.33 | ≡ (1) |
| Exchange rate - average (R\$/US\$) | 2.17 | 2.17 | 2.17 | ≡ (4) | 2.28 | 2.27 | 2.26 | ▼ (2) |
| Over-Selic Target - end-of-period (% p.a.) | 14.00 | 14.00 | 14.00 | ≡ (5) | 13.00 | 13.00 | 13.00 | ≡ (8) |
| Over-Selic Target - average (% p.a.) | 15.16 | 15.28 | 15.28 | ≡ (1) | 13.50 | 13.50 | 13.50 | ≡ (4) |
| Net Public Sector Debt (% of GDP) | 50.50 | 50.50 | 50.50 | ≡ (11) | 49.00 | 49.00 | 49.10 | ▲ (1) |
| GDP growth (%) | 3.50 | 3.51 | 3.57 | ▲ (2) | 3.70 | 3.70 | 3.70 | ≡ (5) |
| Industrial Production (% growth) | 4.48 | 4.50 | 4.50 | ≡ (3) | 4.50 | 4.50 | 4.50 | ≡ (6) |
| Current Account (US\$ billion) | 9.00 | 9.00 | 9.00 | ≡ (13) | 4.50 | 4.50 | 4.50 | ≡ (5) |
| Trade Balance (US\$ billion) | 40.00 | 40.32 | 40.28 | ▼ (2) | 35.00 | 36.00 | 36.00 | ≡ (2) |
| Foreign Direct Investment (US\$ billion) | 15.00 | 15.40 | 15.50 | ▲ (3) | 16.50 | 16.30 | 16.40 | ▲ (1) |
| Regulated Prices (%) | 4.50 | 4.50 | 4.50 | ≡ (8) | 4.20 | 4.40 | 4.50 | ▲ (1) |

* trend since the last Market Readout; the figures in parenthesis express the number of weeks with the same behavior (▲ increase, ▼ decrease or = stability)



| Market Expectations | | | | | | | | | |
|--|-------------|------------|-------|---------------|-------------|------------|-------|---------------|-------|
| Median - Top 5 - Short Term | May/06 | | | | Jun/06 | | | | |
| | 4 weeks ago | 1 week ago | Today | Weekly trend* | 4 weeks ago | 1 week ago | Today | Weekly trend* | |
| | IPCA (%) | 0.21 | 0.30 | 0.20 | ▼ (1) | 0.22 | 0.22 | 0.19 | ▼ (3) |
| IGP-DI (%) | 0.23 | 0.15 | 0.22 | ▲ (1) | 0.33 | 0.28 | 0.35 | ▲ (1) | |
| IGP-M (%) | 0.25 | 0.25 | 0.31 | ▲ (1) | 0.17 | 0.17 | 0.17 | = (4) | |
| Exchange rate - end-of-period (R\$/US\$) | 2.14 | 2.12 | 2.10 | ▼ (1) | 2.13 | 2.12 | 2.10 | ▼ (2) | |
| Over-Selic Target (% p.a.) | - | - | - | | 15.00 | 15.25 | 15.13 | ▼ (1) | |

* trend since the last Market Readout; the figures in parenthesis express the number of weeks with the same behavior (increase, decrease or = stability)

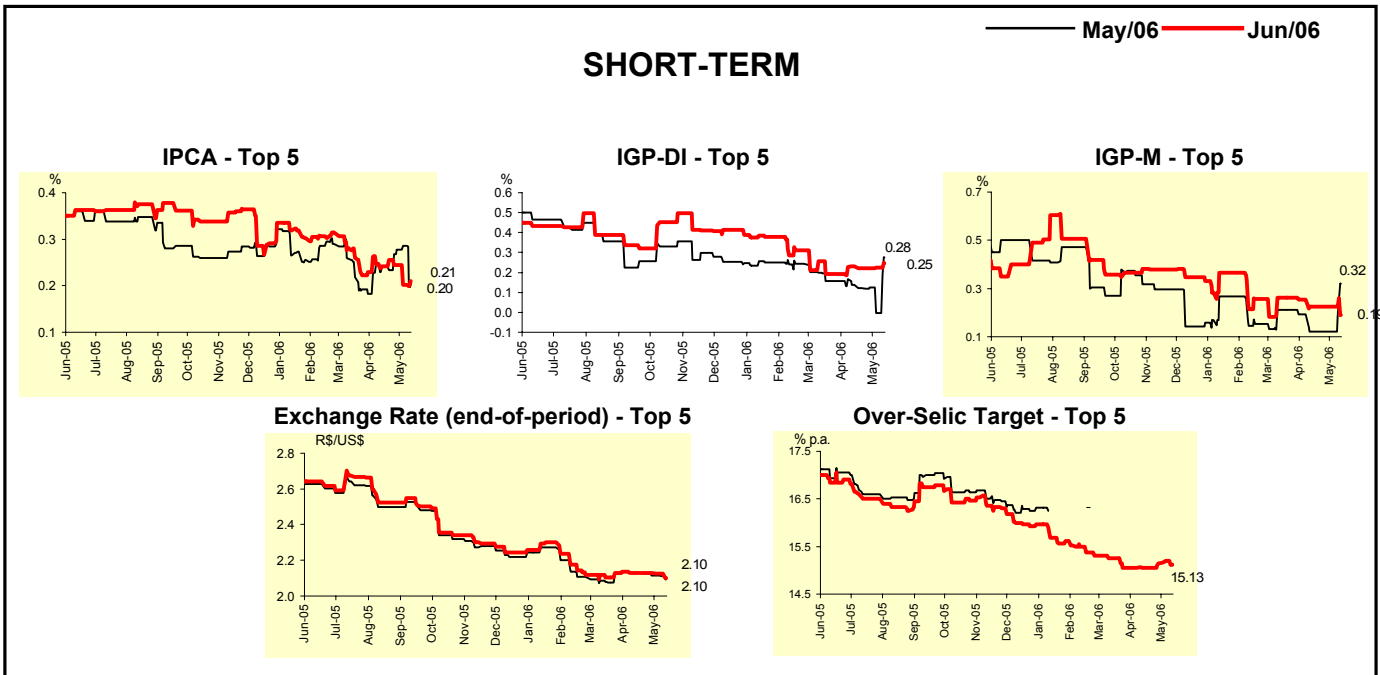


| Market Expectations | | | | | | | | | |
|--|-------------------|------------|-------|---------------|-------------|------------|-------|---------------|--|
| Median - Top 5 | 2006 | | | | 2007 | | | | |
| | 4 weeks ago | 1 week ago | Today | Weekly trend* | 4 weeks ago | 1 week ago | Today | Weekly trend* | |
| | Short Term | | | | | | | | |
| IPCA (%) | 4.30 | 4.18 | 4.18 | = (1) | 4.48 | 4.48 | 4.50 | ▲ (1) | |
| IGP-DI (%) | 3.11 | 2.72 | 3.07 | ▲ (1) | 4.50 | 4.60 | 5.00 | ▲ (2) | |
| IGP-M (%) | 3.00 | 3.08 | 2.84 | ▼ (1) | 4.25 | 4.50 | 4.78 | ▲ (1) | |
| Exchange rate - end-of-period (R\$/US\$) | 2.20 | 2.20 | 2.13 | ▼ (1) | 2.42 | 2.42 | 2.20 | ▼ (1) | |
| Over-Selic Target - end-of-period (% p.a.) | 14.00 | 14.25 | 14.13 | ▼ (1) | 12.75 | 12.75 | 12.75 | = (1) | |
| Medium Term | | | | | | | | | |
| IPCA (%) | 4.47 | 4.31 | 4.31 | = (1) | 4.50 | 4.50 | 4.50 | = (17) | |
| IGP-DI (%) | 2.83 | 2.36 | 2.35 | ▼ (1) | 4.00 | 4.50 | 4.50 | = (3) | |
| IGP-M (%) | 2.45 | 2.33 | 2.58 | ▲ (1) | 4.00 | 4.00 | 4.50 | ▲ (1) | |
| Exchange rate - end-of-period (R\$/US\$) | 2.05 | 2.05 | 2.05 | = (9) | 2.18 | 2.18 | 2.20 | ▲ (1) | |
| Over-Selic Target - end-of-period (% p.a.) | 14.00 | 14.25 | 14.13 | ▼ (1) | 12.00 | 12.38 | 13.13 | ▲ (2) | |

* trend since the last Market Readout; the figures in parenthesis express the number of weeks with the same behavior (increase, decrease or = stability)

| Market Expectations | | | | | | | | |
|--|-------------|------------|-------|---------------|-------------|------------|-------|---------------|
| Average - Top 5 - Short Term | May/06 | | | | Jun/06 | | | |
| | 4 weeks ago | 1 week ago | Today | Weekly trend* | 4 weeks ago | 1 week ago | Today | Weekly trend* |
| IPCA (%) | 0.24 | 0.29 | 0.20 | ▼ (1) | 0.24 | 0.20 | 0.21 | ▲ (1) |
| IGP-DI (%) | 0.14 | 0.00 | 0.28 | ▲ (1) | 0.23 | 0.22 | 0.25 | ▲ (1) |
| IGP-M (%) | 0.12 | 0.12 | 0.32 | ▲ (1) | 0.22 | 0.22 | 0.19 | ▼ (1) |
| Exchange rate - end-of-period (R\$/US\$) | 2.13 | 2.11 | 2.10 | ▼ (1) | 2.13 | 2.13 | 2.10 | ▼ (1) |
| Over-Selic Target (% p.a.) | - | - | - | | 15.05 | 15.20 | 15.13 | ▼ (1) |

* trend since the last Market Readout; the figures in parenthesis express the number of weeks with the same behavior (▲ increase, ▼ decrease or = stability)



| Market Expectations | | | | | | | | |
|--|-------------|------------|-------|---------------|-------------|------------|-------|---------------|
| Average - Top 5 | 2006 | | | | 2007 | | | |
| | 4 weeks ago | 1 week ago | Today | Weekly trend* | 4 weeks ago | 1 week ago | Today | Weekly trend* |
| Short Term | | | | | | | | |
| IPCA (%) | 4.36 | 4.30 | 4.21 | ▼ (3) | 4.36 | 4.43 | 4.45 | ▲ (1) |
| IGP-DI (%) | 2.91 | 2.70 | 3.05 | ▲ (1) | 4.74 | 4.85 | 5.00 | ▲ (2) |
| IGP-M (%) | 2.85 | 2.85 | 2.72 | ▼ (1) | 4.25 | 4.50 | 4.83 | ▲ (1) |
| Exchange rate - end-of-period (R\$/US\$) | 2.18 | 2.18 | 2.13 | ▼ (1) | 2.40 | 2.37 | 2.24 | ▼ (1) |
| Over-Selic Target - end-of-period (% p.a.) | 14.18 | 14.18 | 14.00 | ▼ (1) | 12.75 | 12.79 | 12.72 | ▼ (1) |
| Medium Term | | | | | | | | |
| IPCA (%) | 4.48 | 4.36 | 4.29 | ▼ (5) | 4.48 | 4.48 | 4.48 | = (9) |
| IGP-DI (%) | 2.75 | 2.43 | 2.59 | ▲ (1) | 4.33 | 4.50 | 4.40 | ▼ (1) |
| IGP-M (%) | 2.48 | 2.32 | 2.58 | ▲ (1) | 4.30 | 4.10 | 4.20 | ▲ (1) |
| Exchange rate - end-of-period (R\$/US\$) | 2.08 | 2.06 | 2.04 | ▼ (1) | 2.15 | 2.15 | 2.15 | = (8) |
| Over-Selic Target - end-of-period (% p.a.) | 13.95 | 14.00 | 14.00 | = (1) | 12.30 | 12.56 | 12.94 | ▲ (3) |

* trend since the last Market Readout; the figures in parenthesis express the number of weeks with the same behavior (▲ increase, ▼ decrease or = stability)